

**WEST RIVER VALLEY
REGIONAL SOLID WASTE MANAGEMENT DISTRICT**

REGIONAL SOLID WASTE MANAGEMENT PLAN

TABLE OF CONTENTS

| PART ONE: Activities Analysis | | PART TWO: Action Plan | |
|--|------|--|------|
| Section | Page | Section | Page |
| 101 Overview | | 201 Mission Statement | 40 |
| History | 2 | 202 Executive Summary | |
| Current | 2 | Strategies | 40 |
| 102 Organization and Administration | | 203 Goals | |
| District | 3 | District’s High-Level Goals | 44 |
| Board | 4 | District Plan’s Goal Areas | 44 |
| Staff | 6 | Collection | 44 |
| 103 Revenues and Expenditures | | Disposal | 46 |
| District | 7 | Recycling | 47 |
| 104 Demographics | | Waste Reduction | 48 |
| Planning Area | 11 | Special Materials | 48 |
| Population | 12 | Education and Public Awareness | 48 |
| Industry | 13 | 204 Goal Areas-Objectives | |
| Facilities | 18 | Collection | 53 |
| Haulers | 26 | Disposal | 53 |
| Volumes | 31 | Recycling | 53 |
| 105 Current Services | | Waste Reduction | 53 |
| Collection | 32 | Special Materials | 53 |
| Disposal | 33 | 205 Administrative | |
| Recycling | 34 | Plan Implementation | 54 |
| Special Materials | 36 | Implementation Timetable | 54 |
| Education and Public Awareness | 39 | Funding and Budgeting | 55 |
| | | 207 Appendices | |
| | | Audit-Accountant’s Report & Financial Statements | 61 |

PART ONE: ACTIVITIES ANALYSIS

Section 101: Overview

HISTORY

The solid waste district began as the Western Arkansas Regional Solid Waste Planning Board and comprised of six counties in Western Arkansas: Sebastian, Crawford, Franklin, Logan, Scott and Polk. In 1991, the planning board was dissolved and replaced by the Western Arkansas Regional Solid Waste Management Board as authorized by Act 752 enacted in 1990 by the General Assembly of the State of Arkansas.

Polk County withdrew from the District in June, 1991, and joined the Upper-Southwest Regional Solid Waste Management District.

In January, 1992, Sebastian County left the District and through an inter-local agreement with its city governments, organized the Sebastian County Regional Solid Waste Management District.

Johnson County transferred from the West Central Arkansas Solid Waste Management District and the West Arkansas Regional Solid Waste Management Districts merged and Pope, Yell, Conway, Perry, Johnson, Scott, Logan, Franklin and Crawford counties became the **West River Valley Regional Solid Waste Management District**.

The District's greatest accomplishment in the area of solid waste management has been the closing of the small city/county landfills that were inappropriately designed and operated.

CURRENT

Each year the Board of Directors has an annual planning retreat to review the district's solid waste management plan goals. Needs and priorities are discussed and the goals may be revised or modified. An annual budget with action plan is then prepared by the staff, for adopted by the Board which then refers it back to staff for implementation.

The ultimate purpose of the Solid Waste Plan is to have a fully integrated (waste reduction, recycling, collection and disposal) system that is economical, environmentally safe and easily accessible to every citizen in the district.

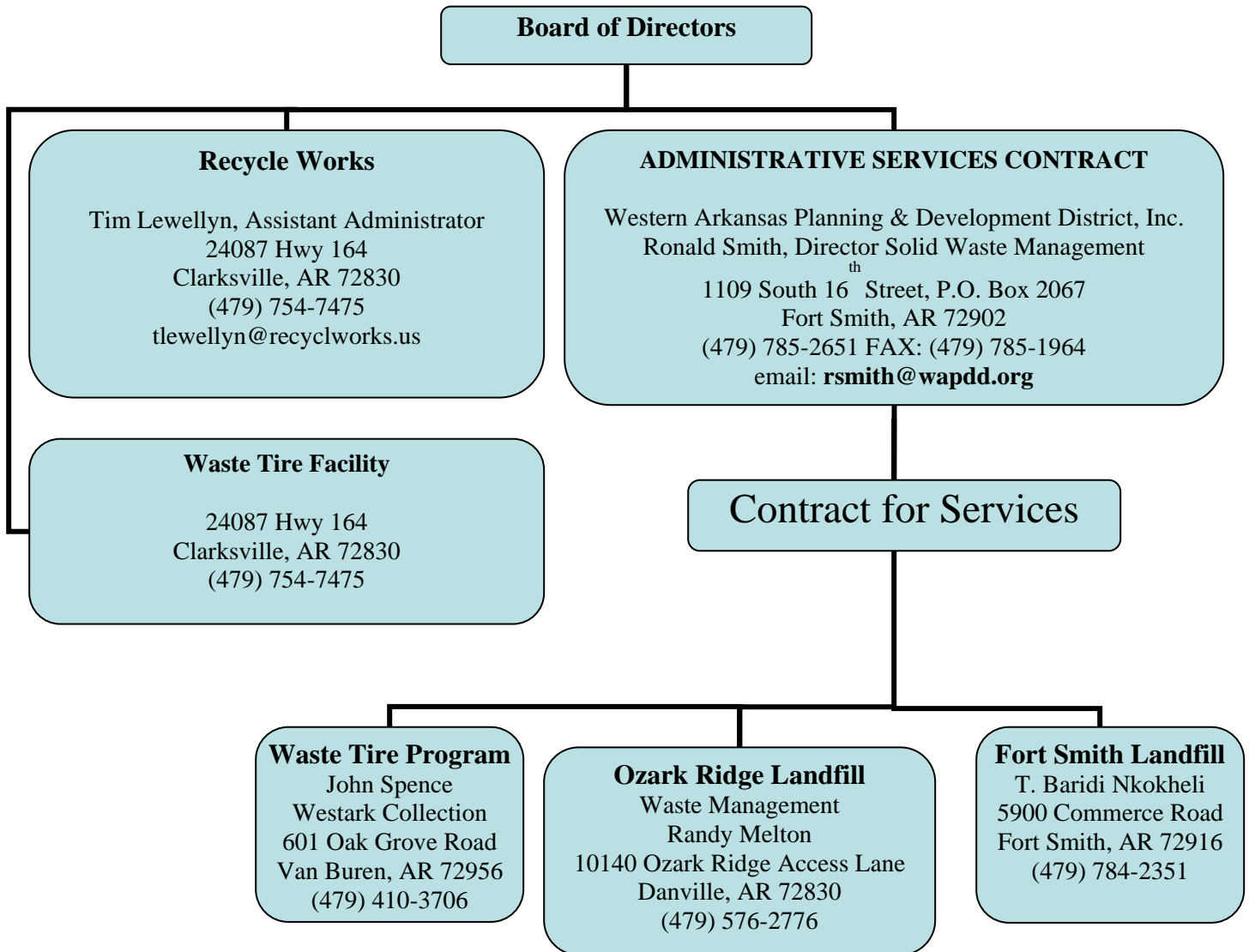
The current system of solid waste management in the district is a patchwork of providers and facilities with a duplication of services in some areas and no services in others.

Section 102: Organization and Administration

DISTRICT

The West River Valley Regional Solid Waste Management District consists of nine counties in Western Arkansas: Crawford, Franklin, Johnson, Pope, Conway, Perry, Yell, Logan and Scott.

**West River Valley Regional Solid Waste Management District
Organization Chart**



BOARD

A Board of Directors governs the District. The Directors are the nine county judges and eleven mayors from the class one communities within the nine counties. The board meets at least four times per year, once per quarter, and the meetings are open to the public.

CONWAY COUNTY

The Honorable Jimmy Hart
Conway County Judge
117 South Moose, Room 203
Morrilton, AR 72110
(501) 354-9640
(501) 354-9607 FAX
judge@conwaycounty.org

The Honorable Bobby Kirby
Mayor of Morrilton
PO Box 583
Morrilton, AR 72110
(501) 354-1556
(501) 354-6475
mayorkirby@suddenlinkmail.com

CRAWFORD COUNTY

The Honorable John Hall
Crawford County Judge
300 Main Street, Rm 4
Van Buren, AR 72956
(479)-474-1511
(479)-471-3201 FAX
county.judge@crawford-county.org

Dorvan Wiley
Simmons First National Bank
1902 Fayetteville Road
Van Buren, AR 72956
(479) 474-4045
dorvan.wiley@simmonsfirst.com

FRANKLIN COUNTY

The Honorable Joe Powell
Franklin County Judge
211 West Commercial
Ozark, AR 72949
(479) 667-4726
(479) 667-2234 FAX
fklincojudge@centurytel.net

The Honorable Vernon McDaniel
Mayor of Ozark
PO Box 253
Ozark, AR 72949
(479) 667-2238
(479) 667-4515 FAX
ozarkmayor@centurytel.net

JOHNSON COUNTY

The Honorable Mike Jacobs
Johnson County Judge
PO Box 278
Clarksville, AR 72830
(479) 754-2175
(479) 754-6098 FAX
jcjudge@cswnet.com

The Honorable Billy Helms
Mayor of Clarksville
Box 205 Walnut Street
Clarksville, AR 72830
(479) 754-6486
(479) 754-4052 FAX
clrksvil@cswnet.com

LOGAN COUNTY

The Honorable Edgar Lee Holt
Logan County Judge
25 West Walnut Room 22
Paris, AR 72855
(479) 963-3601
(479) 963-2590 FAX
nita@magtel.com

The Honorable Bill Elsken
Mayor of Paris
PO Box 271
Paris, AR 72855
(479) 963-2450
(479) 963-3807 FAX
mayor@paris-arkansas.com

Ms. Cynthia Totton

808 Mulberry Drive
Booneville, AR 72927
(479) 675-4800 ext. 6419
(479)675-6126 Cell
cmtotton@hotmail.com

PERRY COUNTY

Ms. Michelle Breashears
PO Box 358
Perryville, AR 72126
(501) 889-5128
(501) 889-2574 FAX
judge@arbbs.net

POPE COUNTY

The Honorable Jim Ed Gibson
Pope County Judge
100 West Main
Russellville, AR 72801
(479) 968-7487
(479) 967-6874 FAX
pcjudge@cox-internet.com

The Honorable Jerry Don Barrett
Mayor of Atkins
PO Box 128
Atkins, AR 72823
(479) 641-2900
(479) 641-7052 FAX
cityofatkins@cebridge.net

The Honorable Tyrone Williamson
Mayor of Russellville
PO Box 428
Russellville, AR 72801
(479) 968-2098
(479) 968-8050 FAX
cityhall@russellvillearkansas.org

SCOTT COUNTY

The Honorable James Forbes
Scott County Judge
100 West 1st Street Suite 1
Waldron, AR 72958
(479) 637-2155
(479) 637-4199 FAX
mj_scjudges@yahoo.com

The Honorable Randy Butler
Mayor of Waldron
PO Box 310
Waldron, AR 72958
(479) 637-3181
(479) 637-5020 FAX
randybutler@cebridge.net

YELL COUNTY

The Honorable Brad Wear
Yell County Judge
PO Box 219
Danville, AR 72833
(479) 495-4860 or (479) 229-4858
(479) 495-4875 or (479) 229-1130 FAX
yellcojud@arkwest.com

The Honorable Carolyn McGee
Mayor of Dardanelle
PO Box 360
Dardanelle, AR 72834
(479) 229-4500
(479) 229-4804 FAX
cmmcgee@cox-internet.com

OFFICERS

| | |
|---------------------|---------------|
| Chairman | Edgar Holt |
| Vice Chairman | Carolyn McGee |
| Secretary/Treasurer | Jim Ed Gibson |

EXECUTIVE COMMITTEE

| | | |
|-----------------------------------|----------------------------|-----------------------------|
| Vernon McDaniel, Franklin County | Jim Ed Gibson, Pope County | Edgar Holt, Logan County |
| Michelle Breashears, Perry County | | Mike Jacobs, Johnson County |
| Jimmy Hart, Conway County | Carolyn McGee, Yell County | Randy Butler, Scott County |

STAFF

Ron Smith
Administrator
1109 South 16th Street, P.O. Box 2067
Fort Smith, AR 72902
(479) 785-2651 FAX: (479) 785-1964
email: rsmith@wapdd.org

Tim Lewellyn
Assistant Administrator
24087 Hwy 164
Clarksville, AR 72830
(479)-754-7475 FAX: (479)-754-7524
email: tlewellyn@recycleworks.us

**RECYCLE WORKS
TIRE PROCESSING**

Dutch Houston
Operations Director
24087 Hwy 164
Clarksville, AR 72830
(479)-754-7475
FAX: (479)-754-7524
dhouston@recycleworks.us

Geneva Freeman
Office Manager
24087 Hwy 164
Clarksville, AR 72830
(479)-754-7475
FAX: (479)-754-7524
recycle@recycleworks.us

Abbie Cox
Education and Outreach
Coordinator
24087 Hwy 164
Clarksville, AR 72830
(479)-754-7475
FAX: (479)-754-7524
acox@recycleworks.us

Mike Sawyer
RPC Manager
24087 Hwy 164
Clarksville, AR 72830
(479)-754-7475
FAX: (479)-754-7524
msawyer@recycleworks.us

Section 103: Revenues and Expenditures

DISTRICT

WEST RIVER VALLEY REGIONAL SOLID WASTE MANAGEMENT DISTRICT
STATEMENT OF FINANCIAL POSITION
DECEMBER 31, 2006

ASSETS

| | | |
|---|--------------|------------------------------|
| Investments | | \$1,753,921.07 |
| Investments - Recycle Works | | 37,719.87 |
| Property & Equipment | | |
| Purchased with Local Funds | \$380,037.41 | |
| Purchased with State Funds | 191,308.30 | |
| Less Accumulated Depreciation | (60,798.63) | |
| Purchased by Recycle Works | 17,415.07 | |
| Less Accumulated Depr. by Recycle Works | (3,283.14) | |
| Total | | |
| Fixed | | |
| Assets | | <u>524,679.01</u> |
| TOTAL ASSETS | | <u><u>\$2,316,319.95</u></u> |

LIABILITIES AND NET ASSETS

LIABILITIES

| | | |
|--|--------------------|---------------------|
| Accounts Payable | | \$46,498.77 |
| Accounts Payable - Recycle Works | | 13,388.84 |
| Payroll Withholdings & Other - Recycle Works | | 2,617.45 |
| Deferred Revenues-State | | |
| State Equipment Support Funds | \$160,862.08 | |
| State | | |
| Tire | | |
| Funds | 214,679.93 | |
| State Recycling Funds | 166,768.64 | |
| | | 542,310.65 |
| Deferred Revenues-Local | | |
| Local Assessments | \$1,465,887.97 | |
| Local Equipment Reserve | 67,245.00 | |
| Local Anti-Litter Funds | 72,937.33 | |
| Local Tire Funds | 67,083.52 | |
| Local Recycling - Recycle Works | 55,664.77 | |
| | | <u>1,728,818.59</u> |
| TOTAL LIABILITIES | | <u>2,333,634.30</u> |
| NET ASSETS | | |
| Temporarily Restricted | \$510,547.08 | |
| Unrestricted | (508,042.17) | |
| Recycle Works | <u>(19,819.26)</u> | |
| | | <u>(17,314.35)</u> |

TOTAL LIABILITIES AND NET ASSETS

\$2,316,319.95

WEST RIVER VALLEY REGIONAL SOLID WASTE MANAGEMENT DISTRICT
STATEMENT OF ACTIVITIES
FOR THE YEAR ENDED DECEMBER 31, 2006

REVENUE

| | | |
|---|-------------------|---------------------|
| Local Revenue: | | |
| Solid Waste Assessments | | \$214,444.53 |
| Truck Tire Handling | | 46,948.76 |
| Equipment Rentals | | 67,245.00 |
| Interest and Other | | 77,139.28 |
| Anti-Litter 2005 Carried Forward | | 82,937.33 |
| Local - Recycle Works | | 142,124.50 |
| Plus 2005 Local Carried Forward | | <u>1,274,714.53</u> |
| Total Local Revenue Available | | \$1,905,553.93 |
| State Revenue: | | |
| State Tire Grant-2005 Equip. Carried | \$181,159.56 | |
| State Tire Grant-2006 Received | 778,437.23 | |
| State Tire Grant-2006 Admin. Received | 118,607.63 | |
| State Truck Tire-2006 Fees Received | <u>105,712.45</u> | |
| State Tire Funds Revenue | | 1,183,916.87 |
| State Recyc. Grant-1998 Carried Forward | \$9,979.50 | |
| State Recyc. Grant-2004 Proj. Carried Fwr'd | 4,400.00 | |
| State Recyc. Grant-2005 Proj. Carried Fwr'd | 71,786.00 | |
| State Recyc. Grant-2006 Proj. Rec'd | 133,928.00 | |
| State Recyc. Grant-2005 Recy Works Fwr'd | 90,240.00 | |
| State Recyc. Grant-2006 Recy Works Rec'd | 161,630.92 | |
| State Recyc. Grant-2005 Recy Admin Fwr'd | 23,764.94 | |
| State Recyc. Grant-2006 Recy Admin Rec'd | 49,272.00 | |
| State E-Waste Study Grant-2006 Rec'd | 25,000.00 | |
| Recycling Funds Available | | <u>570,001.36</u> |
| Total State Revenue Available | | <u>1,753,918.23</u> |

| | | |
|--|------------------|-----------------------|
| Total Revenue Available | | \$3,659,472.16 |
| Less Revenue Deferred to YR | | |
| 2007: | | |
| State Tire Grant | (\$149,394.21) | |
| State Tire Grant | | |
| Admin | (65,285.72) | |
| State Tire Grant Equipment | (160,862.08) | |
| State Recycling | | |
| Grants | (61,496.64) | |
| State Grants - Recycle | | |
| Works | (105,272.00) | |
| Local Funds - Recycle | | |
| Works | (55,664.77) | |
| Local Equipment Reserve | (67,245.00) | |
| Local Tire Funds | (67,083.52) | |
| Local Anti-Litter | (72,937.33) | |
| Local Assessment | (1,465,887.97) | |
| | | <u>(2,271,129.24)</u> |
| REVENUE APPLIED TO YEAR 2006 ACTIVITY | | <u>\$1,388,342.92</u> |
| EXPENDITURES | | |
| Waste Tire Grant | | |
| Expenditures | \$808,374.86 | |
| Recycling Grant Expenditures | 253,633.80 | |
| Recycling Grant Expenditures - Recycle Works | 149,598.92 | |
| Anti-Litter Expenses | 10,000.00 | |
| Local Fund | | |
| Expenses: | | |
| Local spent on Recycling - Recycle Works | \$86,459.73 | |
| Local spent on Tire | | |
| Expense | 4,693.36 | |
| Local spent on Other Admin. Expense | 43,945.36 | |
| Consultants | 7,700.00 | |
| Legal | 190.00 | |
| Travel and | | |
| Meetings | 8,492.31 | |
| Auditing | 2,395.00 | |
| Other Miscellaneous | | |
| Expenses | <u>12,859.58</u> | |
| TOTAL 2006 | | |
| EXPENSES | | <u>\$1,388,342.92</u> |
| REVENUES OVER | | |
| EXPENDITURES | | <u><u>\$0.00</u></u> |

WEST RIVER VALLEY REGIONAL SOLID WASTE MANAGEMENT DISTRICT
 STATEMENT OF NET ASSETS
 YEAR ENDED DECEMBER 31, 2006

| | TEMPORARILY RESTRICTED | UNRESTRICTED |
|---|---------------------------|----------------|
| Beginning Balance January 1, 2006 | \$505,300.15 | (\$499,729.90) |
| Adj. Recycle Works Beginning Balance | (3,065.34) | |
| Current Year Revenue over Expenses | 0.00 | 0.00 |
| Investment from Local Funds - Furniture and Equipment | 40,773.64 | (40,773.64) |
| Transfer of Current Year Depreciation Provision from Investment in Fixed Assets After Disposition of Local Fund F & E | (32,461.37) | 32,461.37 |
| | | |
| Balance December 31, 2006 | \$510,547.08 | (\$508,042.17) |

WEST RIVER VALLEY
REGIONAL SOLID WASTE
MANAGEMENT DISTRICT
STATEMENT OF CASH
FLOWS
DECEMBER 31,2006

INCREASE (DECREASE) IN
CASH

| | |
|---|------------------------------|
| CASH FLOWS FROM OPERATING ACTIVITIES | |
| EXCESS REVENUES OVER EXPENDITURES | \$0.00 |
| | |
| ADJUSTMENTS TO RECONCILE EXCESS REVENUES TO NET CASH PROVIDED BY OPERATING ACTIVITIES: | |
| DECREASE IN ACCOUNTS RECEIVABLE | 53,719.77 |
| DECREASE IN ACCOUNTS RECEIVABLE - Recycle Works | 37,500.00 |
| DECREASE IN CURRENT LIABILITIES | (9,674.29) |
| DECREASE IN CURRENT LIABILITIES - Recycle Works | (5,023.32) |
| INCREASE IN DEFERRED REVENUES | 336,193.50 |
| INCREASE IN DEFERRED REVENUES - Recycle Works | <u>18,164.77</u> |
| NET CASH PROVIDED BY OPERATIONS | <u><u>\$430,880.43</u></u> |
| | |
| CASH FLOWS FROM INVESTING ACTIVITIES: | |
| NET INCREASE IN FIXED ASSETS | (\$8,312.27) |
| NET INCREASE IN FIXED ASSETS - Recycle Works | <u>(5,121.63)</u> |
| NET CASH OF INVESTING ACTIVITIES | <u><u>(\$13,433.90)</u></u> |
| | |
| NET INCREASE IN CASH | \$417,446.53 |
| | |
| CASH, BEGINNING OF YEAR - WRVRSWMD | \$1,381,994.36 |
| CASH, BEGINNING OF YEAR - RECYCLE WORKS | <u>(\$7,799.95)</u> |
| CASH, END OF YEAR | <u><u>\$1,791,640.94</u></u> |

Section 104: Demographics

PLANNING AREA

West River Valley Regional Solid Waste Management District



The West River Valley Regional Solid Waste Management District is made up of the following counties and cities.

Conway County

Menifee
Morrilton
Oppello
Plumerville

Crawford County

Alma
Chester
Dyer
Kibler
Mountainburg
Mulberry
Rudy
Van Buren

Franklin County

Altus
Branch
Charleston
Denning
Ozark
Wiederkehr Village

Johnson County

Clarksville
Coal Hill
Hartman
Knoxville
Lamar

Logan County

Blue Mountain
Booneville
Caulksville
Magazine
Morrison Bluff
Paris
Ratcliff
Scranton
Subiaco

Perry County

Adona
Casa
Fourche
Houston
Perry
Perryville

Pope County

Atkins
Dover
Hector
London
Pottsville
Russellville

Scott County

Mansfield
Waldron

Yell County

Belleville
Corinth
Danville
Dardanelle
Havana
Ola
Plainview

POPULATION

POPULATION AND HOUSING BY COUNTY: Arkansas and WRVRSWMD, 2000

| Population | 2000 Total Population | Housing Units |
|-------------------|------------------------------|----------------------|
| Conway County | 20,336 | 9,028 |
| Crawford County | 53,247 | 21,315 |
| Franklin County | 17,771 | 7,673 |
| Johnson County | 22,781 | 9,926 |
| Logan County | 22,486 | 9,942 |
| Perry County | 10,209 | 4,702 |
| Pope County | 54,469 | 22,851 |
| Scott County | 10,996 | 4,924 |
| Yell County | 21,139 | 9,157 |
| Total | 233,434 | 99,518 |
| Arkansas | 2,673,400 | 1,173,043 |

Source: U.S. Census Bureau, Census 2000

POPULATION PROJECTIONS BY COUNTY

| COUNTY | 2005 | 2010 | 2015 | 2020 |
|---------------|----------------|----------------|----------------|----------------|
| Conway | 20,589 | 20,589 | 20,589 | 20,589 |
| Crawford | 57,364 | 61,451 | 65,539 | 69,627 |
| Franklin | 18,148 | 18,567 | 18,986 | 19,404 |
| Johnson | 23,972 | 25,250 | 26,527 | 27,804 |
| Logan | 23,022 | 23,638 | 24,255 | 24,871 |
| Perry | 10,496 | 10,696 | 10,897 | 11,097 |
| Pope | 56,412 | 58,810 | 61,207 | 63,604 |
| Scott | 11,046 | 11,264 | 11,481 | 11,698 |
| Yell | 21,332 | 21,275 | 21,218 | 21,161 |
| TOTAL | 242,381 | 251,540 | 260,699 | 269,855 |

Source: University of Arkansas at Little Rock (UALR)

INDUSTRY

CONWAY COUNTY: Economic Profile-Statistics by Economic Sector

| NAICS Industry Code | Industry Description | Number of Establishments | Annual Payroll (\$1,000) | Number of Employees |
|---|--|--------------------------|--------------------------|---------------------|
| NAICS INDUSTRIES | | | | |
| 31-33 | Manufacturing | 27 | 39,40 | 1,75 |
| 42 | Wholesale trade | 22 | 6,65 | 271 |
| 44-45 | Retail trade | 89 | 15,75 | 1,058 |
| 51 | Information | 6 | 916 | 54 |
| 53 | Real estate & rental & leasing | 11 | 522 | 23 |
| 54 | Professional, scientific & technical services | 28 | 8,942 | 203 |
| 56 | Administrative & support & waste management & remediation services | 9 | D | e |
| 61 | Educational services | 2 | D | a |
| 62 | Health care & social assistance | 44 | 17,513 | 788 |
| 71 | Arts, entertainment & recreation | 3 | D | b |
| 72 | Accommodation & food services | 29 | 3,149 | 376 |
| 81 | Other services (except public administration) | 21 | 1,960 | 58 |
| MERCHANT WHOLESALERS | | | | |
| 42 | Wholesale trade | 20 | D | c |
| MANUFACTURES' SALES BRANCHES AND SALES OFFICES | | | | |
| 42 | Wholesale trade | 1 | D | b |

CRAWFORD COUNTY: Economic Profile-Statistics by Economic Sector

| NAICS Industry Code | Industry Description | Number of Establishments | Annual Payroll (\$1,000) | Number of Employees |
|---|--|--------------------------|--------------------------|---------------------|
| NAICS INDUSTRIES | | | | |
| 31-33 | Manufacturing | 58 | 86465 | 3325 |
| 42 | Wholesale trade | 74 | D | 500-999 |
| 44-45 | Retail trade | 160 | 28738 | 1681 |
| 51 | Information | 7 | D | 250-499 |
| 53 | Real estate & rental & leasing | 40 | 1401 | 88 |
| 54 | Professional, scientific & technical services | 67 | D | 250-499 |
| 56 | Administrative & support & waste management & remediation services | 35 | D | 100-249 |
| 61 | Educational services | 3 | D | 1-19 |
| 62 | Health care & social assistance | 70 | 32019 | 1341 |
| 71 | Arts, entertainment & recreation | 11 | D | 20-99 |
| 72 | Accommodation & food services | 56 | 9982 | 1074 |
| 81 | Other services (except public administration) | 73 | 6793 | 378 |
| MERCHANT WHOLESALERS | | | | |
| 42 | Wholesale trade | 66 | D | f |
| MANUFACTURES' SALES BRANCHES AND SALES OFFICES | | | | |
| 42 | Wholesale trade | 3 | D | a |

INDUSTRY

FRANKLIN COUNTY: Economic Profile-Statistics by Economic Sector

| NAICS Industry Code | Industry Description | Number of Establishments | Annual Payroll (\$1,000) | Number of Employees |
|---|--|--------------------------|--------------------------|---------------------|
| NAICS INDUSTRIES | | | | |
| 31-33 | Manufacturing | 21 | 24039 | 1047 |
| 42 | Wholesale trade | 6 | D | 20-99 |
| 44-45 | Retail trade | 56 | 7496 | 509 |
| 51 | Information | 6 | D | 20-99 |
| 53 | Real estate & rental & leasing | 7 | 232 | 21 |
| 54 | Professional, scientific & technical services | 14 | D | 20-99 |
| 56 | Administrative & support & waste management & remediation services | 2 | D | 1-19 |
| 61 | Educational services | 2 | D | 1-19 |
| 62 | Health care & social assistance | 32 | 9677 | 619 |
| 71 | Arts, entertainment & recreation | 2 | D | 1-19 |
| 72 | Accommodation & food services | 25 | 2555 | 275 |
| 81 | Other services (except public administration) | 16 | 1058 | 61 |
| MERCHANT WHOLESALERS | | | | |
| 42 | Wholesale trade | 5 | D | b |
| MANUFACTURES' SALES BRANCHES AND SALES OFFICES | | | | |
| 42 | Wholesale trade | | | |

JOHNSON COUNTY: Economic Profile-Statistics by Economic Sector

| NAICS Industry Code | Industry Description | Number of Establishments | Annual Payroll (\$1,000) | Number of Employees |
|---|--|--------------------------|--------------------------|---------------------|
| NAICS INDUSTRIES | | | | |
| 31-33 | Manufacturing | 33 | 70652 | 3020 |
| 42 | Wholesale trade | 8 | 572 | 29 |
| 44-45 | Retail trade | 90 | 15560 | 867 |
| 51 | Information | 6 | 664 | 35 |
| 53 | Real estate & rental & leasing | 13 | 567 | 41 |
| 54 | Professional, scientific & technical services | 28 | 1447 | 80 |
| 56 | Administrative & support & waste management & remediation services | 8 | 447 | 27 |
| 61 | Educational services | z | z | z |
| 62 | Health care & social assistance | 40 | 17913 | 716 |
| 71 | Arts, entertainment & recreation | 3 | 55 | 11 |
| 72 | Accommodation & food services | 33 | 3654 | 429 |
| 81 | Other services (except public administration) | 32 | 2711 | 191 |
| MERCHANT WHOLESALERS | | | | |
| 42 | Wholesale trade | 8 | 572 | 29 |
| MANUFACTURES' SALES BRANCHES AND SALES OFFICES | | | | |
| 42 | Wholesale trade | | | |

INDUSTRY

LOGAN COUNTY: Economic Profile-Statistics by Economic Sector

| NAICS Industry Code | Industry Description | Number of Establishments | Annual Payroll (\$1,000) | Number of Employees |
|---|--|--------------------------|--------------------------|---------------------|
| NAICS INDUSTRIES | | | | |
| 31-33 | Manufacturing | 25 | 49563 | 2124 |
| 42 | Wholesale trade | 14 | 1829 | 78 |
| 44-45 | Retail trade | 94 | 12067 | 814 |
| 51 | Information | 5 | 785 | 26 |
| 53 | Real estate & rental & leasing | 11 | 222 | 14 |
| 54 | Professional, scientific & technical services | 24 | 1261 | 70 |
| 56 | Administrative & support & waste management & remediation services | 7 | 264 | 20 |
| 61 | Educational services | z | z | z |
| 62 | Health care & social assistance | 34 | 11263 | 615 |
| 71 | Arts, entertainment & recreation | 5 | D | 1-19 |
| 72 | Accommodation & food services | 26 | 2744 | 329 |
| 81 | Other services (except public administration) | 27 | 1665 | 99 |
| MERCHANT WHOLESALERS | | | | |
| 42 | Wholesale trade | 13 | D | b |
| MANUFACTURES' SALES BRANCHES AND SALES OFFICES | | | | |
| 42 | Wholesale trade | | | |

PERRY COUNTY: Economic Profile-Statistics by Economic Sector

| NAICS Industry Code | Industry Description | Number of Establishments | Annual Payroll (\$1,000) | Number of Employees |
|---|--|--------------------------|--------------------------|---------------------|
| NAICS INDUSTRIES | | | | |
| 31-33 | Manufacturing | z | z | z |
| 42 | Wholesale trade | 4 | D | 1-19 |
| 44-45 | Retail trade | 20 | 2068 | 143 |
| 51 | Information | 2 | D | 1-19 |
| 53 | Real estate & rental & leasing | 4 | 630 | 20 |
| 54 | Professional, scientific & technical services | 9 | 704 | 34 |
| 56 | Administrative & support & waste management & remediation services | 6 | 427 | 32 |
| 61 | Educational services | z | z | z |
| 62 | Health care & social assistance | 14 | D | 100-249 |
| 71 | Arts, entertainment & recreation | z | z | z |
| 72 | Accommodation & food services | 3 | 153 | 15 |
| 81 | Other services (except public administration) | 3 | D | 1-19 |
| MERCHANT WHOLESALERS | | | | |
| 42 | Wholesale trade | 4 | D | a |
| MANUFACTURES' SALES BRANCHES AND SALES OFFICES | | | | |
| 42 | Wholesale trade | | | |

INDUSTRY

POPE COUNTY: Economic Profile-Statistics by Economic Sector

| NAICS Industry Code | Industry Description | Number of Establishments | Annual Payroll (\$1,000) | Number of Employees |
|---|--|--------------------------|--------------------------|---------------------|
| NAICS INDUSTRIES | | | | |
| 31-33 | Manufacturing | 74 | 127614 | 4346 |
| 42 | Wholesale trade | 86 | 18050 | 641 |
| 44-45 | Retail trade | 306 | 62071 | 3545 |
| 51 | Information | 24 | D | 100-249 |
| 53 | Real estate & rental & leasing | 53 | 3212 | 164 |
| 54 | Professional, scientific & technical services | 104 | D | 500-999 |
| 56 | Administrative & support & waste management & remediation services | 58 | 16998 | 735 |
| 61 | Educational services | 7 | 288 | 17 |
| 62 | Health care & social assistance | 146 | 64227 | 2457 |
| 71 | Arts, entertainment & recreation | 14 | 1183 | 111 |
| 72 | Accommodation & food services | 105 | 16093 | 1817 |
| 81 | Other services (except public administration) | 105 | 8801 | 503 |
| MERCHANT WHOLESALERS | | | | |
| 42 | Wholesale trade | 78 | D | f |
| MANUFACTURES' SALES BRANCHES AND SALES OFFICES | | | | |
| 42 | Wholesale trade | 2 | D | a |

SCOTT COUNTY: Economic Profile-Statistics by Economic Sector

| NAICS Industry Code | Industry Description | Number of Establishments | Annual Payroll (\$1,000) | Number of Employees |
|---|--|--------------------------|--------------------------|---------------------|
| NAICS INDUSTRIES | | | | |
| 31-33 | Manufacturing | 16 | D | 1000-2499 |
| 42 | Wholesale trade | 6 | D | 20-99 |
| 44-45 | Retail trade | 30 | 5183 | 374 |
| 51 | Information | 3 | 192 | 11 |
| 53 | Real estate & rental & leasing | 6 | 264 | 28 |
| 54 | Professional, scientific & technical services | 11 | 268 | 22 |
| 56 | Administrative & support & waste management & remediation services | z | z | z |
| 61 | Educational services | z | z | z |
| 62 | Health care & social assistance | 16 | 5560 | 281 |
| 71 | Arts, entertainment & recreation | 1 | D | 1-19 |
| 72 | Accommodation & food services | 14 | 478 | 89 |
| 81 | Other services (except public administration) | 10 | D | 20-99 |
| MERCHANT WHOLESALERS | | | | |
| 42 | Wholesale trade | 6 | D | b |
| MANUFACTURES' SALES BRANCHES AND SALES OFFICES | | | | |
| 42 | Wholesale trade | | | |

INDUSTRY

YELL COUNTY: Economic Profile-Statistics by Economic Sector

| NAICS Industry Code | Industry Description | Number of Establishments | Annual Payroll (\$1,000) | Number of Employees |
|---|--|---------------------------------|---------------------------------|----------------------------|
| NAICS INDUSTRIES | | | | |
| 31-33 | Manufacturing | 24 | 67449 | 3671 |
| 42 | Wholesale trade | 11 | 1175 | 48 |
| 44-45 | Retail trade | 69 | 7871 | 585 |
| 51 | Information | 4 | D | 20-99 |
| 53 | Real estate & rental & leasing | 15 | 403 | 33 |
| 54 | Professional, scientific & technical services | 16 | D | 20-99 |
| 56 | Administrative & support & waste management & remediation services | 13 | 7809 | 224 |
| 61 | Educational services | z | z | z |
| 62 | Health care & social assistance | 39 | 15554 | 740 |
| 71 | Arts, entertainment & recreation | 5 | D | 20-99 |
| 72 | Accommodation & food services | 19 | 2446 | 326 |
| 81 | Other services (except public administration) | 15 | 941 | 64 |
| MERCHANT WHOLESALERS | | | | |
| 42 | Wholesale trade | 10 | D | b |
| MANUFACTURES' SALES BRANCHES AND SALES OFFICES | | | | |
| 42 | Wholesale trade | | | |

CENSUS DEFINATIONS AND CODE CLASSIFICATIONS

- D Withheld to avoid disclosing data of individual companies, data are included in higher level totals
- N Not available or not comparable
- S Withheld because estimate did not meet publication standards
- Z Less than half the unit shown
- a 0 – 19 employees
- b 20 – 99 employees
- c 100 – 249 employees
- e 250 – 499 employees
- f 500 – 999 employees
- g 1,000 – 2,499 employees
- h 2,500 – 4,999 employees
- I 5,000 – 9,999 employees
- j 10,000 24,000 employees
- k 25,000 49,000 employees
- l 50,000 – 99,999 employees
- m 100,000 or more employees
- p 10 to 19 percent estimated
- q 20 to 29 percent estimated
- r Revised
- s Sampling error exceed 40 percent

Source: U.S. Census Bureau, Economic Census 2002

FACILITIES

CONWAY COUNTY SOLID WASTE FACILITIES

- 1. Name of Facility** City of Morrilton Landfill **Permit Number** 0257-S
2. Contact Person Eugene Edwards
3. Mailing Address PO Box 583 **County** Conway
Morrilton, AR 72110
4. Phone Number 501-354-5299 **Fax Number** 501-354-6475
5. Classification **Class 1 Landfill** X **Class 4 Landfill** X
Transfer Station **Compost Facility**
6. Area Served Conway and Perry County
Hidgen, Arkansas
7. Tipping Fee **Per Ton** Varies per customer
Per Cubic Yard Varies per customer
Other (explain) We set the rate per the customer
8. Material the facility will accept Asbestos and any item not listed below
9. Material the facility will not accept Tires, batteries, car bodies, liquids, and appliances with Freon
10. Approximate annual volume in tons or cubic yards Approximately 52,000 tons
11. Days and hours of operation Monday-Friday, 7:00 am-3:30 pm
Saturday, 8:00 am-Noon

CRAWFORD COUNTY SOLID WASTE FACILITIES

- 1. Name of Facility** Friendly Sanitation **Permit Number** 0075-SG-TSW
2. Contact Person Jackie White
3. Mailing Address PO Drawer 1717 **County** Crawford
Van Buren, AR 72957
4. Phone Number 479-471-1263 **Fax Number** 479-471-1263
5. Classification **Class 1 Landfill** X **Class 4 Landfill**
Transfer Station **Compost Facility**
6. Area Served Van Buren
7. Tipping Fee **Per Ton**
Per Cubic Yard
Other (explain) Recycling mostly (bulk by item)
8. Material the facility will accept Bulk, yard waste, newspapers, metal, aluminum can, steel cans (food cans)
9. Material the facility will not accept Household trash, batteries or hazardous waste
10. Approximate annual volume in tons or cubic yards
11. Days and hours of operation Wednesday, 8:00 am-5:00 pm
Saturday, 8:00 am-3:30 pm

FACILITIES

CRAWFORD COUNTY SOLID WASTE FACILITIES, continued

1. Name of Facility Van Buren Compost Facility **Permit Number** 0027-SG-CYW
2. Contact Person Steve Dufrense
3. Mailing Address PO Drawer 1269 **County** Crawford
 2806 Bryan Rd
 Van Buren, AR 72956
4. Phone Number 479-474-5067 **Fax Number** 479-471-8969
5. Classification **Class 1 Landfill** **Class 4 Landfill**
Transfer Station **Compost Facility** X
6. Area Served Crawford County
7. Tipping Fee **Per Ton**
Per Cubic Yard No fee for residents
Other (explain)
8. Material the facility will accept Yard waste
9. Material the facility will not accept Garbage, lumber, pallets
10. Approximate annual volume in tons or cubic yards 7200 yards (720 tons)
11. Days and hours of operation Wednesday & Saturday (seasonal)
 8:00 am-Noon

1. Name of Facility Waste Management **Permit Number** 0084-SG-TSW
2. Contact Person Jim Goodman
3. Mailing Address 2504 Industrial Park Road **County** Crawford
 Van Buren, AR 72956
4. Phone Number 479-474-2806 or 800-489-6029 **Fax Number** 479-478-5830
5. Classification **Class 1 Landfill** **Class 4 Landfill**
Transfer Station X **Compost Facility**
6. Area Served Crawford, Sebastian, Logan Counties in Arkansas
 Leflore County in Oklahoma
7. Tipping Fee **Per Ton** \$36.90
Per Cubic Yard \$10.00
Other (explain) Asbestos by yard
8. Material the facility will accept Commercial, industrial and household waste
9. Material the facility will not accept Yard waste, grass, leaves, brush, used oil, tires, batteries, hazardous toxic
 Wastes, cleaning chemicals, herbicides or pesticides, paints or liquid of
 any kind.
10. Approximate annual volume in tons or cubic yards 76,000 tons
11. Days and hours of operation Monday – Friday
 8:00 am-5:00 pm

FACILITIES**FRANKLIN COUNTY SOLID WASTE FACILITIES**

1. Name of Facility City of Ozark Transfer Station **Permit Number** 0087-SG-TSW
2. Contact Person Mayor Vernon McDaniel
3. Mailing Address PO Box 253 **County** Franklin
 Ozark, AR 72949
4. Phone Number 479-667-2238 **Fax Number** 479-667-4515
5. Classification **Class 1 Landfill** **Class 4 Landfill**
Transfer Station X **Compost Facility**
6. Area Served Franklin County
7. Tipping Fee **Per Ton**
Per Cubic Yard \$23.50
Other (explain)
8. Material the facility will accept Household waste, metal, household hazardous waste
9. Material the facility will not accept Tires, yard waste
10. Approximate annual volume in tons or cubic yards
11. Days and hours of operation Monday – Friday, 7:00 am-3:30 pm
 Saturday, 8:00 am-Noon

JOHNSON COUNTY SOLID WASTE FACILITIES

1. Name of Facility Johnson County Landfill **Permit Number** 278-S4
2. Contact Person Judge Mike Jacobs
3. Mailing Address PO Box 278 **County** Johnson
 Clarksville, AR 72830
4. Phone Number 479-754-2175 **Fax Number** 479-754-6098
5. Classification **Class 1 Landfill** **Class 4 Landfill** X
Transfer Station X **Compost Facility**
6. Area Served Johnson, Pope, Madison, Logan, and Franklin counties
7. Tipping Fee **Per Ton** Transfer station-\$20.00 commercial
Per Cubic Yard Class IV-\$7.00
Other (explain) Individuals-\$5.00 per pickup truck
8. Material the facility will accept Any non-hazards
9. Material the facility will not accept Burn barrels, hazardous materials or liquids
10. Approximate annual volume in tons or cubic yards 60,000 tons
11. Days and hours of operation Monday – Saturday, 7:00 am-3:00 pm

FACILITIES

LOGAN COUNTY SOLID WASTE FACILITIES

1. Name of Facility Paris Transfer Station **Permit Number** 0021-56-75W
2. Contact Person Larry Roberson
3. Mailing Address PO Box 271 **County** Logan
Paris, AR 72855
4. Phone Number 479-963-2450 **Fax Number** 479-963-3807
5. Classification **Class 1 Landfill** **Class 4 Landfill**
Transfer Station X **Compost Facility**
6. Area Served City of Paris and north Logan County
7. Tipping Fee **Per Ton**
Per Cubic Yard \$12.00 city resident/\$14.00 non-resident
Other (explain) \$5.00 each for white goods
8. Material the facility will accept Class I and IV household wastes, white goods, recyclable metals
9. Material the facility will not accept Anything suspect, hazardous or toxic
10. Approximate annual volume in tons or cubic yards 1,480 tons (includes curbside pick-up)
11. Days and hours of operation Friday – Saturday, 8:00 am-4:00 pm
479-963-3719

PERRY COUNTY SOLID WASTE FACILITIES

1. Name of Facility Perry County Transfer Station **Permit Number** 0096-SG-TSW
2. Contact Person Terry Ellison
3. Mailing Address PO Box 358 **County** Perry
Perryville, AR 72126
4. Phone Number 501-889-5644 **Fax Number** 501-889-2574
5. Classification **Class 1 Landfill** **Class 4 Landfill**
Transfer Station X **Compost Facility**
6. Area Served Perry County
7. Tipping Fee **Per Ton**
Per Cubic Yard \$4.00
Commercial Waste: \$4.60/compacted truck, \$2.34/non-compacted truck
Other (explain)
8. Material the facility will accept Class I
9. Material the facility will not accept Non-class I
10. Approximate annual volume in tons or cubic yards 11,200 tons
11. Days and hours of operation Tuesday – Saturday, 7:30 am- 3:30 pm

FACILITIES

PERRY COUNTY SOLID WASTE FACILITIES, continued

1. Name of Facility Casa-Perry County Landfill **Permit Number** 0264-S
2. Contact Person True Robinson
3. Mailing Address PO Box 358 **County** Perry
Perryville, AR 72126
4. Phone Number 501-889-5128 **Fax Number** 501-889-2574
5. Classification **Class 1 Landfill** **Class 4 Landfill** X
Transfer Station **Compost Facility**
6. Area Served Perry County
7. Tipping Fee **Per Ton**
Per Cubic Yard \$4.00
Other (explain)
8. Material the facility will accept Class IV
9. Material the facility will not accept Non-class IV
10. Approximate annual volume in tons or cubic yards 1800 cubic yards, 9400 class
11. Days and hours of operation 1st & 3rd Saturday, 8:00 am-4:00 pm

POPE COUNTY SOLID WASTE FACILITIES

1. Name of Facility Russellville Yard Waste Facility **Permit Number** PO156
2. Contact Person Mike Vernon
3. Mailing Address 3115 South Mobile **County** Pope
Russellville, AR 72811
4. Phone Number 479-968-1944 **Fax Number** 479-968-8050
5. Classification **Class 1 Landfill** **Class 4 Landfill**
Transfer Station **Compost Facility** X
6. Area Served Russellville
7. Tipping Fee **Per Ton**
Per Cubic Yard \$5.43
Other (explain) \$5.00 minimum charge per load
8. Material the facility will accept Tree limbs, branches, leaves, grass clippings
9. Material the facility will not accept Anything but the items listed above (#8)
10. Approximate annual volume in tons or cubic yards 30 tons
11. Days and hours of operation Tuesday – Thursday, 9:00 am-3:00 pm
Saturday, 8:00 am-4:00 pm

FACILITIES**SCOTT COUNTY SOLID WASTE FACILITIES**

1. Name of Facility Waldron Transfer Station **Permit Number** WTX12340000864027
2. Contact Person Mayor Randy Butler
3. Mailing Address PO Box 310 **County** Scott
 Waldron, AR 72958
4. Phone Number 479-637-2614 **Fax Number** 479-637-5020
5. Classification **Class 1 Landfill** **Class 4 Landfill**
Transfer Station X **Compost Facility**
6. Area Served
7. Tipping Fee **Per Ton** \$1.00: Citizens pay a \$0.01 sales tax at all registers for sanitation charges
Per Cubic Yard \$40/ .30
Other (explain) Uncompacted 30 yards-\$0.15
8. Material the facility will accept Household waste, household hazardous waste, Class IV & I, metal
9. Material the facility will not accept Limbs, leaves, concrete, bricks, rocks, commercial hazardous waste
10. Approximate annual volume in tons or cubic yards 4500 tons
11. Days and hours of operation Monday – Friday, 8:00 am-4:30 pm

YELL COUNTY SOLID WASTE FACILITIES

1. Name of Facility Danville-Yell Co. Transfer Station **Permit Number** 0073-SG-TSW
2. Contact Person Lance Wilkins
3. Mailing Address PO Box 534 **County** Yell
 Danville, AR 72833
4. Phone Number 479-495-0529 **Fax Number** 479-495-4875
 479-495-5130
5. Classification **Class 1 Landfill** **Class 4 Landfill**
Transfer Station X **Compost Facility**
6. Area Served Danville and surrounding areas
7. Tipping Fee **Per Ton**
Per Cubic Yard \$14.00-Yell County Resident, \$18.00-non-resident
Other (explain) \$20.00 per personal pickup truck load
 Construction Material-\$30.00 per pickup truck load
8. Material the facility will accept Household trash, construction materials, white goods, scrap metal
9. Material the facility will not accept Tires, brush, liquids, paint or batteries
10. Approximate annual volume in tons or cubic yards 12,000 cu yard
11. Days and hours of operation Monday – Friday, 8:00 am-4:00 pm
 Saturday, 8:00 am-3:00 pm

FACILITIES

YELL COUNTY SOLID WASTE FACILITIES, continued

1. Name of Facility Dardanelle-Yell Co. Transfer Station **Permit Number** 0074-SG-TSW

2. Contact Person Lance Wilkins

3. Mailing Address PO Box 534 **County** Yell
Danville, AR 72833

4. Phone Number 479-495-0529 **Fax Number** 479-495-4875
479-495-5130

5. Classification **Class 1 Landfill** **Class 4 Landfill**
Transfer Station X **Compost Facility**

6. Area Served Dardanelle and surrounding areas, Pope Co.

7. Tipping Fee
Per Ton
Per Cubic Yard \$14.00-Yell County Resident, \$18.00-non-resident
Other (explain) \$20.00 per personal pickup truck load
Construction Material-\$30.00 per pickup truck load

8. Material the facility will accept Household trash, construction materials, white goods, scrap metal

9. Material the facility will not accept Tires, brush, liquids, paint or batteries

10. Approximate annual volume in tons or cubic yards 3800-7000 tons (28,000-30,000 cu yards)

11. Days and hours of operation Monday – Friday, 8:00 am-4:00 pm
Saturday, 8:00 am-3:00 pm

1. Name of Facility Ola-Yell Co. Transfer Station **Permit Number** 0072-SG-TSW

2. Contact Person Lance Wilkins

3. Mailing Address PO Box 534 **County** Yell
Danville, AR 72833

4. Phone Number 479-495-0529 **Fax Number** 479-495-4875
479-495-5130

5. Classification **Class 1 Landfill** **Class 4 Landfill**
Transfer Station X **Compost Facility**

6. Area Served Ola and surrounding areas

7. Tipping Fee
Per Ton
Per Cubic Yard \$14.00-Yell County Resident, \$18.00-non-resident
Other (explain) \$20.00 per personal pickup truck load
Construction Material-\$30.00 per pickup truck load

8. Material the facility will accept Household trash, construction materials, white goods, scrap metal

9. Material the facility will not accept Tires, brush, liquids, paint or batteries

10. Approximate annual volume in tons or cubic yards 3,000 cu yard

11. Days and hours of operation Wednesday, Noon-4:00 pm
Saturday, 8:00 am-3:00 pm

FACILITIES**YELL COUNTY SOLID WASTE FACILITIES, continued**

| | | | |
|---|--|----------------------|-------------------------|
| 1. Name of Facility | Ozark Ridge Landfill | Permit Number | 225-S1-R3 |
| 2. Contact Person | Randy Melton | | |
| 3. Mailing Address | 10140 Ozark Ridge Access Lane Danville, AR 72833 | County | Yell |
| 4. Phone Number | 479-576-2776 | Fax Number | 479-576-4136 |
| 5. Classification | Class 1 Landfill | X | Class 4 Landfill |
| | Transfer Station | | Compost Facility |
| 6. Area Served | Yell, Pope, Johnson, Franklin, Crawford counties and others as needed | | |
| 7. Tipping Fee | Per Ton | \$39.00 | |
| | Per Cubic Yard | | |
| | Other (explain) | Asbestos by yard | |
| 8. Material the facility will accept | Municipal solid waste, special waste if approved and manifested, construction debris | | |
| 9. Material the facility will not accept | Tires, lead based paint, refrigerators (anything with Freon), crossties, pesticides, and batteries | | |
| 10. Approximate annual volume in tons or cubic yards | 50,000 tons | | |
| 11. Days and hours of operation | Monday – Friday, 8:00 am-4:30 pm | | |

SOLID WASTE HAULERS

| Hauler Information | Classification of Waste | Frequency of Service | Service Area |
|--|---|--------------------------------|---|
| CONWAY COUNTY | | | |
| Conway County Waste 2656 Hwy 9 Morrilton, AR 72110 501-354-1393 | Residential | Weekly | Conway County |
| Huff Sanitation PO Box 222 Morrilton, AR 72110 501-354-5230 | Residential Commercial | Weekly | Rural Conway County |
| CRAWFORD COUNTY | | | |
| Friendly Sanitation P.O. Box 1717 Van Buren, AR 72957-1717 479-471-1263 | Residential Commercial | Weekly | Van Buren City Limits |
| G & J Trash Service PO Box 310 Mulberry, AR 72947 479-997-2041 | Residential | Weekly | Crawford County and Franklin County |
| Roll Off Services 1100 South 28 th Street Van Buren, AR 72956 479-471-7900 | Residential Commercial Industrial | Weekly Bi-weekly On Call | Crawford County Franklin County Logan County Sebastian County Some Oklahoma |
| Waste Management 2504 Industrial Park Road Van Buren, AR 72956 479-474-2806 | Commercial Industrial | On Call | Van Buren Fort Smith Crawford County Sebastian County |
| Waste Removal Experts P.O. Box 6096 Van Buren, AR 72957 479-632-0203 | Residential Commercial | Weekly | Crawford County Fort Smith, Arkansas Gans, Oklahoma |
| FRANKLIN COUNTY | | | |
| City of Charleston P.O. Box 426 Charleston, AR 72933 479-965-2269 | Residential Commercial | Weekly | City limits of Charleston Some Rural Areas Near City |
| Mountain Top Disposal P.O. Box 755 Ozark, AR 72949 479-667-1245 | Residential Commercial | Weekly | Rural Franklin County |
| City of Ozark P.O. Box 253 Ozark, AR 72949 479-667-2238 | Residential Commercial | Weekly | City of Ozark |

SOLID WASTE HAULERS

| Hauler Information | Classification of Waste | Frequency of Service | Service Area |
|--|---|--|--|
| JOHNSON COUNTY | | | |
| A & J Trash (Alan Mize) P.O. Box 838 Lamar, AR 72846 479-754-0086 | Residential Commercial | Weekly | Johnson County Some Franklin County |
| W. W. Service Don Warren P.O. Box 51 Clarksville, AR 72830 479-754-6392 | Residential Commercial Industrial | Weekly | Ozone Hagarville, Lamar, Jamestown New Spadra and Clarksville |
| W & W Dumpster Service John Roughly PO Box 51 Clarksville, AR 72830 479-754-6392 | Commercial | Weekly | Johnson County |
| W & W Disposal CR PO Box 608 Lamar, AR 72846 479-754-6392 | Residential | Weekly | Rural Johnson County Lamar & other |
| Woodard's Recycling Center P.O. Box 8 Clarksville, AR 72830 479-754-7373 | Commercial Industrial | Commercial-Daily Industrial-On Call | Clarksville Some Johnson County |
| John's Disposal John Green 2296 CR 3470 Clarksville, AR 72830 479-705-2012 | Residential | Weekly | Rural Johnson County Some Newton County |
| Reynolds Trash Service Michael Reynolds 106A Rabbit Hill Road Hartman, AR 72840 479-497-1799 | Residential | Weekly | Clarksville, Alix, Denning, Weiderkehr Village, Rural Southeast Franklin County |
| River Valley Environmental Jerry Childers PO Box 380 Clarksville, AR 72830 479-754-5033 | Commercial | Daily | Clarksville Some rural Johnson County |
| Yates Tractor Works & Hauling, James L. Yates HC 33 Box 37 Pettigrew, AR 72752 479-979-4297 | Residential | Weekly | Rural Johnson County |

SOLID WASTE HAULERS

| Hauler Information | Classification of Waste | Frequency of Service | Service Area |
|--|--------------------------------------|----------------------|--|
| LOGAN COUNTY | | | |
| City of Booneville 497 East Main; Suite A Booneville, AR 72927 479-675-3811 | Residential | Weekly | City of Booneville |
| City of Paris P.O. Box 271 Paris, AR 72855 479-963-2450 | Residential | Weekly | City Limits of Paris |
| Willard Hice Trash Service Willard Hice 5680 Cox Valley Road Magazine, AR 72943 479-635-8925 | Residential | Weekly | Rural North Logan County Part of South Logan County |
| Circle "S" Waste & Salvage 220 West 1st Booneville, AR 72927 479-675-2210 | Industrial | On Call | Booneville Charleston Greenwood |
| Jay's Trash Service LLC P.O. Box 426 Booneville, AR 72927 479-675-3362 | Residential Commercial | Daily Weekly | Booneville Magazine Rural South Logan County |
| Krigbaum Trash Service 5033 East State Hwy. 22 Paris, AR 72855 479-963-6112/518-0418 | Residential Some Small Commercial | Weekly | Rural Logan County between Magazine and Paris |
| Steve's Sanitation P.O. Box 686 Paris, AR 72855 479-963-9203 | Residential | Weekly | Logan County Some Franklin County |
| PERRY COUNTY | | | |
| E & H Disposal Mary England P.O. Box 859 Perryville, AR 72126 501-889-5164 | Residential Some Small Commercial | Weekly | Rural Perry County |

SOLID WASTE HAULERS

| Hauler Information | Classification of Waste | Frequency of Service | Service Area |
|--|--|--|--|
| PERRY COUNTY, continued | | | |
| Jones Trash Service PO Box 115 Perry, AR 72125 501-354-3226 | Residential | Weekly | Perry and Rural Perry County |
| Hotchkiss Disposal 264 East Thompson Road Perry County 501-662-4894 | Residential Commercial | Weekly | Perryville Rural Perry County |
| Mary's Trash Service PO Box 825 Perryville, AR 72126 501-662-4967 | Residential | Weekly | Perry Rural Perry County |
| JCMC's Trash Service Caleb Crain 99 Crain Lane Plainview, AR 72857 501-984-2330 | Residential | Weekly | Rural Perry County |
| Perry County P.O. Box 358 Perryville, AR 72126 501-889-5128 | Residential Commercial | No pick-up services Transport Roll-off boxes to Landfill | Perry County |
| POPE COUNTY | | | |
| Allied Contractors Don Treadwell 4343 N Arkansas Ave Russellville, AR 72802 479-968-8533 | Residential | Weekly | Pope County |
| Arkansas Tech University Russellville, AR 72801 479-968-0261 | Residential & Commercial within Tech Only | Dumpsters picked up daily by D&C Trash Service | Arkansas Tech University Only |
| Brandon's Trash Service 3 Hunters Gap Loop Pottsville, AR 72858 479-641-0455 | Residential | Weekly | Pope County |
| Cunningham Metals, Inc. 3408 S Arkansas Ave Russellville, AR 72811 479-968-1574 | Residential Commercial | On Call Large Containers Only | Pope County Russellville |
| David's Trash Service P.O. Box 541 Russellville, AR 72811 479-293-3155 | Residential | Weekly | Russellville Rural Pope County Some Johnson County |
| DC Trash Service, Inc. P.O. Box 1305 Russellville, AR 72811 479-970-0475 | Residential Commercial | Weekly Commercial-Daily | Russellville Pope County Part of Yell County |

SOLID WASTE HAULERS

| Hauler Information | Classification of Waste | Frequency of Service | Service Area |
|--|---|------------------------------|---|
| POPE COUNTY, continued | | | |
| Knight & Sons 8498 SR 124 Russellville, AR 72802 479-967-8531 | Residential Some Commercial | Weekly | Pope County Russellville |
| Lee's Trash Management P.O. Box 1900 Russellville, AR 72811 479-968-3465 | Residential Commercial | Weekly | Russellville Pope County |
| Premium Protein Products PO Box 578 Russellville, AR 72811 479-968-2567 | Commercial | Daily Weekly Bi-Weekly | Pope County, Yell County and where ever there is a Pilgrims Pride Plant |
| Reddell Trash Service Cecil Reddell, Billy Holly P.O. Box 277 Dover, AR 72837 479-331-2583 | Residential Commercial | Weekly On Call | Russellville Dover Rural South Pope County Some Yell County Some Johnson County |
| Waste Management 88 Joyce Lane Russellville, AR 72801 479-968-2305 | Residential Commercial Industrial | Weekly or On Call | Russellville, Atkins, Morrilton, Paris, Rural Pope County |
| SCOTT COUNTY | | | |
| City of Waldron P.O. Box 310 Waldron, AR 72958-0310 479-637-3181 | Residential Commercial | Weekly | City of Waldron |
| YELL COUNTY | | | |
| City of Havana PO Box 7 Havana, AR 72842 479-476-2436 | Residential Commercial | Weekly | City of Havana Rural Yell County |
| Morgan Trash Service P.O. Box 252 Danville, AR 72833 479-495-2621 | Residential | Weekly | Danville Rural Yell County |
| Valley Sanitation, Inc 105 Countz Ola, AR 72853 479-489-5665 | Residential Commercial | Weekly | Yell County |

VOLUMES

Solid Waste Deposited to Landfills
West River Valley RSWMD
2006

| Landfill | Class | In District (tons) | Imported from out of District (tons) | Total Tons |
|-------------------|-------|--------------------|--------------------------------------|------------|
| Ozark Ridge | 1 | 96,190.03 | 126.62 | 96,316.65 |
| City of Morrilton | 1 | 37,437.76 | 8,935.13 | 46,372.89 |

| Landfill | Class | In District (cubic yards) | Imported from out of District (cubic yards) | Total Cubic Yards |
|----------------|-------|---------------------------|---|-------------------|
| Johnson County | 4 | 30,987 | | 30,987 |
| Perry County | 4 | 2,040 | | 2,040 |

Solid Waste Exported from the District

| Landfill | Class | Tons |
|----------------------------|-------|-----------|
| City of Fort Smith | 1 | 72,483.60 |
| City of Sallisaw, Oklahoma | 1 | 4,827.37 |

Section 105: Current Services

COLLECTION

| City | Curbside Services | Mandatory/Voluntary | Provided by | Funding Mechanism |
|------------------------|-------------------------------|---------------------|--------------------------------|-------------------------------------|
| CONWAY COUNTY | | | | |
| Menifee | Garbage | Voluntary | City Trucks | Customer Pays |
| Morrilton | Garbage, City Recycle bins | Mandatory | Contract (Waste Management) | Paid on water bill |
| Oppelo | Garbage | Mandatory | Contract | Paid on water bill |
| Plummerville | Garbage | Mandatory | Contract (Huff Sanitation) | Paid on water bill |
| CRAWFORD COUNTY | | | | |
| Alma | Garbage, Recycling | Voluntary | Local Haulers | Customer Pays |
| Chester | Garbage | Voluntary | Local Haulers | Customer Pays |
| Dyer | Garbage | Voluntary | Contract Local Haulers | Paid on water bill Customer Pays |
| Kibler | Garbage | Voluntary | Local Haulers | Customer Pays |
| Mountainburg | Garbage | Voluntary | Local Haulers | Customer Pays |
| Mulberry | Garbage | Mandatory | Contract | Paid on water bill |
| Rudy | Garbage | Voluntary | Local Haulers | Customer Pays |
| Van Buren | Garbage, Recycling | Mandatory | Contract | Paid on water bill |
| FRANKLIN COUNTY | | | | |
| Altus | Garbage | Mandatory | Contract | Paid on water bill |
| Branch | Garbage | Mandatory | Contract | Paid on water bill |
| Charleston | Garbage | Mandatory | City | Paid on water bill |
| Denning | Garbage | Voluntary | Local Haulers | Customer Pays |
| Ozark | Garbage, Recycling | Mandatory | City | Paid on water bill |
| JOHNSON COUNTY | | | | |
| Clarksville | Garbage, Recycling | Voluntary | Local Haulers | Customer Pays |
| Coal Hill | Garbage | Voluntary | Local Haulers | Customer Pays |
| Knoxville | Garbage | Voluntary | Local Haulers | Customer Pays |
| Lamar | Garbage, Recycling | Voluntary | Local Haulers | Customer Pays |
| Hartman | Garbage | Voluntary | Local Haulers | Customer Pays |
| LOGAN COUNTY | | | | |
| Caulksville | Garbage | Mandatory | Contract | City Pays |
| Magazine | Garbage | Voluntary | Local Hauler | Customer Pays |
| Paris | Garbage | Mandatory | City | Paid on water bill |
| Blue Mountain | Garbage | Voluntary | Local Hauler | Customer Pays |
| Booneville | Garbage | Mandatory | City | Paid on water bill |
| Morrison Bluff | Garbage | Voluntary | Local Hauler | Customer Pays |
| Ratcliff | Garbage | Voluntary | Local Hauler | Customer Pays |
| Scranton | | | | |
| Subiaco | Garbage | Voluntary | Local Hauler | Customer Pays |
| PERRY COUNTY | | | | |
| Casa | Garbage | Voluntary | Local Hauler | Customer Pays |
| Perry | Garbage | Voluntary | Local Hauler | Customer Pays |
| Houston | Garbage | Voluntary | Local Hauler | Customer Pays |
| Perryville | Garbage | Voluntary | Local Hauler | Customer Pays |

COLLECTION**POPE COUNTY**

| | | | | |
|--------------|---------|-----------|---------------------------|--------------------|
| Atkins | Garbage | Voluntary | Contract | Paid on water bill |
| Dover | Garbage | Voluntary | Local Haulers | Customer Pays |
| Hector | Garbage | Voluntary | Local Haulers | Customer Pays |
| London | Garbage | Voluntary | Local Haulers | Customer Pays |
| Pottsville | Garbage | Voluntary | Local Haulers | Customer Pays |
| Russellville | Garbage | Voluntary | Contract Local Haulers | Customer Pays |

SCOTT COUNTY

| | | | | |
|--------------|---------|-----------|-------------|--------------|
| Mansfield | Garbage | Mandatory | City Trucks | Scott Co Tax |
| Waldron | Garbage | Mandatory | City | Scott Co Tax |
| Scott County | Garbage | Mandatory | County | Scott Co Tax |

YELL COUNTY

| | | | | |
|------------|---------|-----------|---------------|--------------------|
| Belleville | Garbage | Voluntary | Local Hauler | Customer Pays |
| Danville | Garbage | Voluntary | Local Hauler | Customer Pays |
| Dardanelle | Garbage | Mandatory | Contract | Paid on water bill |
| Ola | Garbage | Voluntary | Local Hauler | Customer Pays |
| Havana | Garbage | Mandatory | City Truck | Paid on water bill |
| Plainview | Garbage | Voluntary | Local Haulers | Customer Pays |

DISPOSAL

See Section 104: Demographics, Facilities

RECYCLING

| CONWAY COUNTY | | | |
|--|---|--|---|
| Morrilton City Hall Recycling Drop-Off | 210 North Moose Street Morrilton, AR 72110 501-354-1556 | Monday-Friday: 8:00am-4:30pm | Corrugated cardboard, old electronics (microwaves, tv's, computers, etc) |
| Conway County Community Center | 1307 North Business 9 Morrilton, AR 72110 501-354-4122 | Sunday-Saturday: Open 24 hours | Newspapers, aluminum cans |
| CRAWFORD COUNTY | | | |
| Alma Recycling Drop-Off Center | Spring Street Alma, AR 479-632-4119 | Monday-Friday: 8:00am-12:00pm, 1:00pm-5:00pm <i>Will need to go by City Hall to get key before dropping off recyclables</i> | Corrugated cardboard, aluminum cans, paper |
| Friendly Sanitation Recycling Drop-off | 2926 Bryan Road Van Buren, AR 72956 479-471-1263 | Wednesday: 9:00am-5:00 pm, Saturday: 7:30am-3:30pm | Newsprint, steel/tin cans, aluminum cans, scrap metal, oil and oil filters |
| Van Buren Compost Facility | 2926 Bryan Road Van Buren, AR 72956 479-471-1263 | Wednesday: 9:00am-5:00 pm, Saturday: 7:30am-3:30pm | Yard waste |
| FRANKLIN COUNTY | | | |
| Altus Recycling Drop Off Center | 232 West Main Street Altus, AR 479-468-4191 | Monday-Friday: 8:00am-4:30pm | Newsprint, paper, magazines, catalogs, aluminum cans, steel/tin cans, plastic bottles, corrugated cardboard, household glass containers |
| Charleston Recycling Drop-off Center | 871 Guy Fenter Drive Charleston, AR 479-965-2269 | Sunday-Saturday: 24 hours | Newsprint, paper, magazines, catalogs, aluminum cans, steel/tin cans, plastic bottles |
| Ozark Transfer Station Recycling Drop-off | 1701 Airport Road Ozark, AR 479-667-2423 | Monday-Friday: 7:00am-3:30pm, Saturday: 7:00am-12:00pm | Newsprint, paper, magazines, catalogs, aluminum cans, steel/tin cans, plastic bottles, corrugated cardboard, household hazardous waste (paint, pesticides, etc) |
| JOHNSON COUNTY | | | |
| Johnson County Landfill Recycling Drop-off | 7089 CR 3311 Clarksville, AR 479-754-2175 | Monday-Saturday: 7:30am-3:00pm | Newsprint, paper, magazines, catalogs, aluminum cans, steel/tin cans, plastic bottles, corrugated cardboard |
| Recycle Works | 24087 Hwy 164 Clarksville, AR 72830 Phone: (479) 754-7475 | Monday-Friday: 8:00am-5:00pm | Newsprint, paper, magazines, catalogs, aluminum cans, steel/tin cans, plastic bottles, corrugated cardboard |

RECYCLING

LOGAN COUNTY

| | | | |
|---|---|--|--|
| Logan County-Booneville Recycling Drop-off Center | 1389 North State Hwy 23 Booneville, AR 479-963-3601 | Wednesday: 9:00am-5:00pm; Saturday: 10:00am-4:00pm | Newsprint, paper, magazines, catalogs, aluminum cans, steel/tin cans, corrugated cardboard |
| Logan County-Paris Recycling Drop-off Center | 197 South Lowder Street Paris, AR 479-963-3601 | Wednesday: 9:00am-5:00pm; Saturday: 10:00am-4:00pm | Newsprint, paper, magazines, catalogs, aluminum cans, steel/tin cans, corrugated cardboard |

PERRY COUNTY

| | | | |
|--|--|---------------------------------|---|
| Perry County Transfer Station Recycling Drop-off | 325 Recreation Drive Perryville, AR 72126 501-889-5128 | Tuesday-Saturday: 7:30am-3:30pm | Newsprint, paper, magazines, catalogs, aluminum cans, steel/tin cans, plastic bottles |
| Heifer International | 55 Heifer Rd Perryville, AR 72126 501-889-5124 | Sunday-Saturday | Newsprint, paper, corrugated cardboard, magazines, glass, plastic bottles, steel/tin cans, aluminum cans, oil filters, scrap metal, motor oil, HHW, vehicle batteries |

POPE COUNTY

| | | | |
|--|--|--|---|
| Pope County Road Department | #5 County Complex Rd Russellville, AR 72801 479-968-7487 | Monday-Friday: 7:00 am-3:00 pm | Tires, hot water tanks, white goods, vehicle batteries, scrap metal |
| Russellville Recycling Drop-off Center | 3115 South Mobile Russellville, AR 72801 479-264-3208 | Monday – Friday: 9:00 am-1:00 pm, 2:00 pm-5:00 pm Saturday: 8:00 am-4:00 pm | Newsprint, paper, magazines, catalogs, aluminum cans, steel/tin cans, plastic bottles, corrugated cardboard |
| Russellville Compost Facility | 3115 South Mobile Russellville, AR 72801 479-264-3208 | Monday – Friday: 9:00 am-1:00 pm, 2:00 pm-5:00 pm Saturday: 8:00 am-4:00 pm | Limbs, leaves, grass, small logs |

SCOTT COUNTY

| | | | |
|--|--|---|---|
| Scott County Transfer Station Recycling Drop-off | 123 Poplar Street Waldron, AR 479-637-2614 | Monday-Friday: 8:00am-4:30pm; 2 nd Saturday of each month: 8:00am-4:00pm | Newsprint, paper, magazines, catalogs, aluminum cans, steel/tin cans, plastic bottles, corrugated cardboard, scrap metal, household hazardous waste (paints, pesticides, etc) |
|--|--|---|---|

YELL COUNTY

| | | | |
|---|---|---|---|
| Yell County Transfer Station Recycling Drop-off | Off Highway 7 Dardanelle, AR 479-495-4860 | Monday-Friday: 8:00am-4:00pm; Saturday: 8:00am-3:00pm | <i>The recycling drop off center is under construction. Items accepted will be updated upon opening of drop off.</i> |
|---|---|---|---|

SPECIAL MATERIALS

ILLEGAL DISPOSAL

In 1998, the District entered into a contract with Divine Intervention of Clarksville, Arkansas to survey each county to identify and evaluate illegal dumps. It was not possible due to the costs involved and the time allocated to the project to catalogue every illegal dump in the district. The plan was to work with the local officials in each county to document the most serious cases of illegal dumping. Each site was photographed, an evaluation form was completed and their locations plotted on county maps. Copies of the maps, along with the evaluation and photos of each site are available at the solid waste district office and at the Solid Waste Division of the Arkansas Department of Environmental Quality.

Since that survey, three illegal dump sites have been cleaned up in Yell County, one in Franklin County three in Pope County and one in Johnson County.

**ILLEGAL DUMP INVENTORY
BY COUNTY (1998 revised)**

| | |
|-----------------|----|
| Conway County | 3 |
| Crawford County | 3 |
| Franklin County | 2 |
| Johnson | 14 |
| Logan County | 2 |
| Perry County | 2 |
| Pope County | 15 |
| Scott County | 1 |
| Yell County | 0 |
| TOTAL | 42 |

SPECIAL MATERIALS**WASTE TIRE SERVICES****WASTE TIRE COLLECTION CENTERS**

| Name | Contact Information | Hours |
|-------------------------------|---|---|
| CONWAY COUNTY | | |
| Agri Coop Service Center | 1119 East Broadway Morrilton, AR 72110 (501) 354-8000 | M-F 7:30 am-5:00 pm SAT 7:30 am-NOON |
| CRAWFORD COUNTY | | |
| Cooley's Tire | 2424 Fayetteville Road Van Buren, AR 72956 (479) 474-8669 | MON-SAT 8:00am-8:00pm |
| Carl's 71 Tire | Hwy. 71 Dean Springs Mountainburg, AR 72946 (479) 632-3991 | M-F 8:00 am-5:00 pm SAT 8:00 am-4:00 pm |
| Farmer's Cooperative | 2111 Industrial Park Road Van Buren, AR 72956 (479) 474-8051 | M-F 7:30 am-5:00 pm SAT 7:30 am-NOON |
| Westark Collection Center | 601 Oak Grove Road Van Buren, AR 72956 (479) 410-3706 | M-F 8:00 am-5:00 pm SAT 8:00 am-NOON |
| FRANKLIN COUNTY | | |
| Ozark Transfer Station | 1701 Airport Road Ozark, AR 72749 (479) 667-2423 | M-F 7:00 am-3:30 pm SAT 8:00 am-NOON |
| JOHNSON COUNTY | | |
| Johnson County Landfill | County Road 261 off Hwy. 352 Clarksville, AR 72830 (479) 754-2175 | MON-SAT 7:00 am- 3:30 pm |
| LOGAN COUNTY | | |
| Logan Co Road Department | 1389 North State Hwy. 23 Booneville, AR 72927 (479) 963-3601 | M,T,T,F 7:00 am-3:30 pm WED 9:00 am-4:30 pm SAT 9:00 am-4:30 pm |
| Logan Co Maintenance Center | 197 Lowder Paris, AR 72855 (479) 963-3601 | M,T,T,F 7:00 am-3:30 pm WED 9:00 am-4:30 pm SAT 9:00 am-4:30 pm |
| PERRY COUNTY | | |
| Perry Co. SW Transfer Station | Recreation Drive Perryville, AR 72126 (501) 889-5128 | TUES-SAT 7:00 am-3:30 pm |
| POPE COUNTY | | |
| Interstate Tire | 109 South Knoxville Russellville, AR 72801 (479) 968-1858 | M-F 8:00 am-5:00 pm SAT 8:00 am-NOON |
| Pope County Road Department | 6701 SR 7 North Dover, AR 72837 (479) 880-1910 | M-F 5:30 am-6:00 pm SAT 5:30 am-NOON |
| SCOTT COUNTY | | |
| Waldron Transfer Station | Industrial Park/P.O. Box 310 Waldron, AR 72958 (479) 637-2614 | M-F 8:00 am-4:30 pm |

WASTE TIRE SERVICES

WASTE TIRE COLLECTION CENTERS, continued

| Name | Contact Information | Hours |
|--------------------|---|---|
| YELL COUNTY | | |
| Tim's Tire Service | 2136 North State Hwy. 7 Dardanelle, AR 72934 (479) 229-1545 | M-F 7:00 am-5:00 pm SAT 7:00 am-NOON |
| Don's Lube | 7 th and Main Danville, AR 72833 (479) 495-3245 | M-F 7:30 am-4:30 pm |

WASTE TIRE PROCESSING FACILITIES

WRVRSWMD Waste Tire Shredding Facility
Johnson County Landfill
7089 CR 3311
Clarksville, AR 72830
(479) 754-7475

BATTERY SERVICES

See Part One, Section 104, Facilities for available services within the District.

WASTE OIL SERVICES

See Part One, Section 104, Facilities for available services within the District.

MEDICAL WASTE SERVICES

There are no medical waste services within the District.

HAZARDOUS WASTE SERVICES

There are no hazardous waste services within the District.

HOUSEHOLD HAZARDOUS WASTE SERVICES

| FRANKLIN COUNTY | SCOTT COUNTY |
|---|---|
| City of Ozark – Transfer Station Ozark, Arkansas (479) 667-2238 | City of Waldron – Transfer Station Waldron, Arkansas (479) 637-2614 |

WASTE ELECTRONICS SERVICES

See Section 104, Recycling for available services within the District.

CONSTRUCTION AND DEMOLITION WASTE SERVICES

See Section 104, Facilities for available services within the District.

OTHER SOLID WASTE SERVICES

See Section 104, Facilities for available services within the District.

EDUCATION AND PUBLIC AWARENESS

See section 203: Goals, District Plan's Goal Areas, Education and Public Awareness

PART TWO: ACTION PLAN

Section 201: Mission Statement

The West River Valley Regional Solid Waste Management District's (District) mission is to define and demonstrate environmental excellence in integrated solid waste management while maintaining economic feasibility.

Section 202: Executive Summary

The District plan was developed using the Statewide Solid Waste Management Plan which emphasizes regional efforts where feasible to solve rural solid waste management issues. The District continues to play a role in ensuring that environmentally responsible, economically competitive solid waste services are available, including programs that are beneficial but not profitable.

STRATEGIES

The role of the Solid Waste Management District in the past decade was to provide technical assistance, training and public information regarding solid waste management issues. The District assisted local units of government in the planning of solid waste management services. A deliberate effort was made not to be involved in the direct delivery of services. That role was historically the responsibility of the local governments or private entrepreneurs. In some cases it worked. For example, most citizens in the District have access to trash collection services or a place to dispose of their solid waste. On the other hand, recycling, waste reduction or other methods for managing solid waste have not developed or have struggled to survive. The Board of Directors made an important decision in 2002 that significantly changed the function of the District. For the first time, the District would provide direct services in areas of solid waste management that the district identified as not being served or being inadequately served. Since that time the District has taken an active role in the development of recycling, waste reduction and education/public awareness programs.

The following objectives guide the District in meeting the specific goals and actions detailed.

1. Increase availability of a comprehensive solid waste management system at the county level.
2. Create and strengthen partnerships among all stakeholders in the solid waste management systems
3. Facilitate professional development opportunities for all stakeholders in solid waste management.

Executive Summary and Asset Analysis
West River Valley Regional Solid Waste Management District
April 5, 2006

1. Organization and Administration

The District Board of Directors consists of the county judges or their designated appointee and mayors of cities of the first class or their designated appointee. Those appointed to serve are confirmed by county quorum court or city council for a term not to exceed two years. A board member can be reappointed.

Conclusion: The present procedure seems to be adequate.

Administration for the district is provided by contract with the Western Arkansas Planning and Development District. The contract period is three years and can be renewed.

Conclusion: No change is anticipated or recommended at this time.

The district contracts for landfill disposal and waste tire collection. The collection of municipal solid waste and the composting programs are under the jurisdiction of participating local governments. The District provides direct service for the collection of recyclable materials and the processing of materials and waste tires.

Conclusion: Service contracts for recycling collection and marketing and waste tire processing have not worked well in the past. The District's decision to provide direct service in these areas seems to be working.

2. Planning Area

The district consists of nine counties in Western Arkansas. The geographic area is large but most of the counties are not heavily populated.

Conclusion: The population base and combined resources of all nine counties affords an economy of scale that makes solid waste facilities and services financially feasible. The geographic boundaries of the district should stay the same.

3. Population and Projections

The University of Arkansas at Little Rock (UALR) population projections for year 2000 were within .01% of the 2000 census data total for the Solid Waste District.

Conclusion: While some rural counties exceeded the projected population growth by several percentage points the total district growth project was right on target. If the UALR population projection for 2010 continues to be accurate, the District can anticipate a 14% growth in population over the next ten years.

4. Solid Waste Volumes and Estimated Disposal Capacity

Solid waste deposited to landfills is about 6.08 pounds, per capita, per day. The amount of imported solid waste to landfills within the District was insignificant.

The permitted disposal capacity of the primary Class 1 landfill for the District (Ozark Ridge Landfill) is less than four years. The City of Morrilton, Class 1 facility, has several years before being filled to capacity.

The Charleston Class 4 landfill closed in 2005. The Johnson County Class 4 has undergone a significant expansion.

Conclusion: The quantity of solid waste per capita is high when compared to the national average postulated by the Franklin and Associates study for USEPA. More emphasis needs to be given to waste reduction and recycling initiatives.

While the permitted landfill capacity may be low there is adequate land for expansion to the Ozark Ridge Landfill plus the District has an agreement with the City of Fort Smith, Arkansas and Sallisaw, Oklahoma to export solid waste to those landfills if the need should arise.

5. City and County Solid Waste Management Systems

One county out of nine and eleven towns out of twenty-seven control municipal solid waste management services (MSW) in their jurisdiction. One county and four towns provide direct service. The other seven communities control MSW by collecting a fee and contracting for service. The remaining eight counties and sixteen towns have not imposed any controls and citizens are free to choose their own method of solid waste disposal.

Fees for solid waste collection in communities and counties with control of the system range from a low of \$5.00 to \$11.75 per household per month with the typical fee being about \$9.00. In counties and towns that do not control MSW collection, the fees start at \$7.50 (one town) with the highest being \$15.00 (one town), but the most of the communities (nine) are paying \$12.00 - \$14.00 per household.

Conclusion: Counties or communities that control the MSW collection system in their jurisdiction will have lower collection fees.

6. Solid Waste Haulers

There are approximately forty licensed haulers in the District. This includes both public and private sector haulers. Public entities with a hauler permit include two counties and three cities.

Each county has one or more licensed solid waste haulers. In many areas, there is an overlapping and duplication of service.

Conclusion: The number of private haulers has changed little since the massive consolidation of hauling companies occurred in the late 1990's. The quality of the equipment being used to haul solid waste has slowly improved (only three provisional licensees). Private entities provide the bulk of the collection services. Collection service is available to residents in every county except for a few isolated rural areas. Local units of government should control the MSW collection system in their area to increase efficiency, reduce the duplication of service and negotiate better rates for their constituents.

7. Solid Waste Facilities

The District has two class 1 and two class 4 landfills, with access to the Landfills at Fort Smith, Arkansas Sallisaw, Oklahoma.

There are eleven transfer stations with one or more in each county except for Conway County where the Morrilton City Landfill is located. Five have been built or renovated within the last four years.

Two permitted Compost Facilities and several smaller composting operations exist in communities that do not require a permit.

The District owns and operates a material recovery facility in Clarksville, Arkansas.

Conclusion: The district has adequate resources for landfill disposal. Three transfer stations are ten or more years old, in need of repair and should be renovated or closed.

8. Recycling Program

Each county has one or more recycling programs at the county level or in a community within the county. Most are drop-off centers with three communities offering curbside collection. The volume of materials collected for recycling has begun to increase since the District began providing direct service to those entities that request it.

Conclusion: The District's plan to support and sustain the existing recycling programs and expand into areas not served has been successful.

9. Special Wastes

There are two Household Hazardous Waste Collection Centers (HHW) in the District.

Each county has one or more waste tire collection locations for a total of twenty-one in the district. The options to dispose of a waste tire by recycling are very limited.

Electronic waste stockpiles are beginning to accumulate around the district.

Conclusion: the District needs at least two more HHW collection centers so that all residents in the District have convenient access to a HHW drop-off center.

The District should continue to recycle waste tires by producing and marketing tire chips for engineering and other applications.

There needs to be a statewide e-waste collection and recycling program.

10. Illegal Dumps

The number of illegal dumps in the District remains about the same. At least four dumpsites have been cleaned up using local funds from the District's Illegal Dumps and Anti-Litter Grant Program.

Conclusion: Local efforts to identify, apprehend, and prosecute those dumping illegally in the District have not been very successful. A statewide program that includes education, enforcement and cleanup of dumpsites should be implemented.

11. Economic Profile

In all counties but one, Perry, fifty percent of those employed are in the manufacturing sector and the remainder in the service industry. The trend during the last decade has been a reduction in the number of people employed in manufacturing. Automation and the exporting of manufacturing operation to counties with cheap labor are the reason. Importation of labor to work at entry-level jobs is another. Service industry employment has increased because of the advances in electronic communications and data processing.

Conclusion: Industry and commerce typically contributes about two-thirds to seventy five percent of the discards to the solid waste stream. That percentage probably will not change although the characteristics of the waste stream might change. The amount of paper should increase because of e-commerce and the amount of manufactured waste decrease.

Section 203: Goals

DISTRICT'S HIGH-LEVEL GOALS

The district developed the following high-level goals to meet the solid waste collection, transfer, disposal, and waste avoidance objectives.

Goal 1: Increase accessibility to an integrated solid waste management system for every user on a county level.

Availability of affordable solid waste and waste avoidance services to users in the River Valley remains one of the districts biggest challenges. The District will continue to support and expand existing successful programs and foster the development of new programs. It will also offer to provide direct services to those communities that are not being adequately served.

Goal 2: Define and develop sustainable solid waste management plans and programs that promote environmental excellence.

A hierarchy of options for the management of solid waste from waste avoidance to landfill disposal is key to the success of sustainable programs. While it is appropriate to comply with environmental regulations, they should be viewed as minimum standards. The District will pursue standards and demonstrate programs that exceed the regulations while maintaining a healthy bottom line.

Goal 3: Provide technical assistance, training, public information and education for the practice of environmental excellence in solid waste management.

People who generate waste and those who collect, process, or dispose of solid waste need to be educated to use options that least harm the environment.

DISTRICT PLAN'S GOAL AREAS

The analysis provided in the following goal areas are based on the most recent available data, however, changes in solid waste infrastructure will obviously have an impact on the projections made.

- Collection** *Develop and implement an integrated solid waste management system that is readily accessible and utilized by every citizen.*

River Valley residents and businesses want economically competitive solid waste services while adhering to environmentally responsible standards. To achieve this sensible aim the District continues to work with the various stakeholders, including waste haulers, transfer station operators and recyclers, to develop and enhance collection infrastructure in the River Valley.

- City and County Collection Systems**

Currently one county out of nine and eleven towns out of twenty-seven control municipal solid waste management services (MSW) in their jurisdiction. One county and four towns provide direct service. The other seven communities control MSW by collecting a fee and contracting for service. The remaining eight counties and sixteen towns have not imposed any controls and citizens are free to choose their own method of solid waste disposal. Fees for solid waste collection in communities and counties with control of the system range from a low of \$5.00 to \$11.75 per household per month with the typical fee being about \$9.00. In counties and towns that do not control MSW collection the fees start at \$7.50 (one town) with the highest being \$15.00 (one town) but the most of the communities (nine) are paying \$12.00 - \$14.00 per household. Ten of the eleven towns with control of the system have implemented a mandatory user fee for solid waste management.

Conclusion: Counties or communities that control the MSW collection system in their jurisdiction will have lower collection fees and are able to better abate uncontrolled dumping, burning etc. Jurisdictional control of MSW collection also allows for recycling and other waste avoidance systems to be implemented.

Goal:

Increase the number of municipalities that manage MSW, either by contract, by franchise agreement or direct service to 50% district wide by 2010.

Action Plan:

1. Conduct a series of forums for local officials to focus on solid waste collection options and opportunities to reduce costs and increase participation in existing collection systems.

Completion Date: December 2008

2. Facilitate the development of community based committees in at least five communities with uncontrolled MSW.

Completion Date: December 2009

3. Explore District provided solid waste billing services for interested communities.

Completion Date: March 2007

- **Solid Waste Haulers**

Public and private waste haulers are on the front line of solid waste management. They are a critical component to successful solid waste management systems in the district. There are thirty-seven licensed haulers in the District, three with provisional licenses. This includes both public and private sector haulers. Public entities with a hauler permit include two counties and three cities. Each county has one or more licensed solid waste hauler. In most areas there is an overlapping and duplication of service. Most of the hauler licenses are held by smaller (fewer than 50 employees) waste hauling firms.

Conclusion: The number of private haulers has changed little since the massive consolidation of hauling companies occurred in the late 1990's. The quality of the equipment being used to haul solid waste has slowly improved (only three provisional licensees). Small private entities provide the bulk of the collection service. Collection service is available to residents in towns and in many unincorporated areas except for isolated rural areas. Local units of government should control the MSW collection system in their area to increase efficiency, reduce the duplication of service, and negotiate better rates for their citizens. Small haulers (and thereby the District) would benefit from assistance and professional development.

Goal:

Facilitate waste hauler training and professional development.

Action Plan:

1. Conduct a series of facilitated workshops for waste haulers to discuss solid waste collection, disposal and financing options available to reduce costs and increase participation in existing collection systems.

Completion Date: December 2008

2. Review the current waste hauler licensing program and, if necessary, adopt changes that encourage training and professional development of waste haulers.

Completion Date: June 2009

2. Disposal

- Solid Waste Volumes and Estimated Disposal Capacity.

Solid waste deposited in landfills from the District in 2001 was approximately 6 pounds, per capita, per day (260,000 tons/233,434 population/365 days). The amount of imported solid waste to landfills within the District was insignificant. The primary Class I landfill for the district is the Ozark Ridge Landfill, owned and operated by Waste Management, Inc. and located in Yell County. It has a total area of 445 acres, with 66 acres of existing permitted area. The disposal capacity of the permitted area is less than four years and currently accepts about 400 tons of waste per day. The City of Morrilton operates a Class 1 landfill with several years before being filled to capacity. The District also has access to the Fort Smith landfill and the Sallisaw, Oklahoma landfill. The Charleston Class 4 landfill closed in 2005, and the Johnson County Class 4 landfill completed a significant expansion in 2005. The district has negotiated a disposal agreement with the Ozark Ridge landfill in Yell County. That contract will expire in 2008. The contracted price for disposal is significantly lower than the price of non-contracted waste disposal.

Conclusion: The quantity of solid waste per capita is high (6.08 pounds, per capita) when compared to the national average of 4.44 pounds postulated by the Franklin and Associates study for USEPA. More emphasis needs to be given to waste reduction and recycling initiatives. The district has adequate resources for landfill disposal. However, if the Class 1 landfill in Northwest Arkansas closes the amount of imported solid waste deposited to the Yell County landfill could increase significantly and shorten the number of years remaining on the current permitted area.

Goal:

Extend the disposal capacity of the District and stabilize landfill disposal costs.

Action Plan:

1. Demonstrate to local units of government the value of working cooperatively in order to leverage better pricing/services.
Completion Date: June 2007
2. Re-negotiate a disposal agreement with a service provider.
Completion Date: March 2008

- Transfer Stations

With the closing of the small community landfills, transfer stations have become essential to the success of collection systems in the district. There are eleven transfer stations with one or more in each county except for Conway County where the Morrilton City Landfill is located. Five have been built or renovated within the last four years. Three transfer stations are ten or more years old.

Conclusion: The older transfer stations are in need of repair and should be renovated or closed. More recycling needs to take place at transfer stations. Transfer stations can make overall collection services much more competitive. Conveniently placed transfer stations are used by haulers and by citizens who wish to self haul their waste. Along with education and enforcement, transfer stations can decrease illegal dumping, burning and uncontrolled management of solid waste.

Goal:

Improve the availability, convenience and efficiency of transfer stations in the district.

Action Plan:

1. Conduct a feasibility study to determine if the district can provide the transportation of solid waste from the transfer stations at a lower cost than a private contractor.
Completion Date: December 2008

2. Provide technical assistance to transfer station operators to facilitate more efficient operations, while providing more services.
Completion Date: On-Going

- Compost facilities

One permitted compost facility and several smaller composting operations exist in communities that do not require a permit. Two private companies provide grinding/shredding services. One private pallet company also provides pallet grinding services with the end product being colored mulch material.

Conclusion: Central composting facilities are not common in small rural cities due to the availability of on-farm and backyard composting. There are a few key industries in the district that could benefit from some type of large scale composting.

Goal:

Divert industrial organic waste from area landfills.

Action Plan:

1. Conduct a study of one industrial facility to determine the feasibility of implementing a waste diversion program.

Completion Date: December 2008

3. Recycling

Each county has one or more recycling program, either at the county level or in a community within the county and three communities offer curbside collection. All drop off centers accept at least three items for recycling. All transfer stations offer some form of recycling, either scrap metal or other household recyclables. In 2004, the District created a recycling and waste reduction program, Recycle Works. Recycle Works represents the District's commitment to provide direct waste diversion and solid waste management service in identified areas. The District purchased a 33,500 square foot building with offices and constructed a regional recycling processing center (RPC). The RPC also serves as the District's waste reduction and outreach hub. The RPC enables recyclable materials, such as commingled containers, commingled paper, cardboard and industrial scrap to be collected, processed and marketed. The RPC currently provides service to fourteen recycling drop off centers, curbside programs, private recyclers, private haulers, Fortune 500 companies, and numerous businesses. Before the RPC was put in place, the volume of materials collected and the number of recycling drop off centers continued to decline. Since the RPC began operation, six new drop off centers have opened and one new curbside recycling program is scheduled to begin operation in 2007. In 2006 the per capita pounds recycled per year for the communities served increased from about 7 pounds to over 34 pounds. The RPC offers local recycling programs, businesses, and industries stable, cost effective transportation, processing and marketing services for recyclables.

Conclusion: The District's recycling facility, Recycle Works, has been a successful component of the overall waste reduction program.

Goal:

Expand recycling opportunities in the district.

Action Plan:

1. Open three local recycling centers in Clarksville, Dardanelle and Perryville.

Completion Date: June 2008

2. Accept one new recyclable material at the RPC each year for at least three years.

Completion Date: December 2008

3. District Electronics-Open Recycling Center.
Completion Date: December 2010

Goal:

Increase the volume of recyclables at the Recycle Works facility to at least 10,000 tons per year.

Action Plan:

1. Increase the number of recycling drop off centers in the district (see above).
Completion Date: On-going
2. Target two industries each year to reduce waste and costs by recycling.
Completion Date: On-going

4. **Waste Reduction**

In order for citizens, businesses and governments to reduce waste, they must first be educated about the importance of the issue. See the “*Education and Public Awareness*” section below.

5. **Special Materials**

- **Illegal Dumps/Littering/Open Burning**

On-going education, remediation, availability to services and enforcement are all key elements to avoiding uncontrolled burning, littering and dumping of solid waste. The District began development of an education outreach program in 2005. Since that time, over 50 presentations have been given to civic, government and business groups concerning illegal dumping, open burning and littering. The number of illegal dumps in the District has remained constant for the past several years. Four dump sites have been cleaned up using grant funds from the Illegal Dumps Abatement Program in the past two years. The Board of Directors appropriated \$100,000 to establish an illegal dumps/anti-litter fund. Mini-grants are allocated from this fund to local governments for cleanup of illegal dumps or to prevent littering. An inventory and a series of overhead aerial photographs were completed in 1998. Since that time several illegal dumps have been cleaned up and several new dumps have been created. There is no evidence that anyone has been prosecuted for illegal dumping in the District in the past four years.

Conclusion: The District needs a comprehensive outreach program for uncontrolled solid waste pollution. The appropriation of monies for the program seems to be adequate. An updated inventory of illegal dumps needs to be completed in order to determine the scope of the illegal dump problem. Enforcement has not been effective in the district. Local efforts to identify, apprehend, and prosecute those dumping should be emphasized. A statewide and/or district wide program that includes, education, enforcement and cleanup of dump sites should be implemented.

Goal:

Identify the scope of illegal dumping in the District.

Action Plan:

1. Work with local, State and federal officials to identify any suspected illegal dumps in the district.
Completion Date: February 2008
2. Investigate potential illegal dumps & prioritize their potential environmental hazard.
Completion Date: January 2008

Goal:

Develop a comprehensive illegal dumps education, enforcement, and remediation program.

Action Plan:

1. Hire an enforcement/control officer for the District.

Completion Date: December 2008

2. Incorporate improper/illegal disposal in all educational material.

Completion Date: on-going

3. Enforcement/control officer work with prosecutors and enforcement personnel to prosecute offenders.

Completion Date: on-going

- Waste Tires

The District currently contracts with Westark Tire Company to operate a comprehensive waste tire collection program. The collection system includes over 40 public and private collection centers in the District using tractor trailers so tires stay covered. The inter-district waste tire program recycles approximately 90% of the waste tires collected at a cost per unit that is one of the cheapest in the state. In 2005, the District purchased processing equipment and built a tire shredding operation at the Johnson County Landfill. The district purchased two 40 foot open dump trailers. The tires are now processed into large chunks and transported to another facility for further size reduction

Conclusion: The state funding seems to be adequate to operate the tire program at this time. The tire processing facility located at the Johnson County Landfill will enhance the effectiveness of the tire program. The end markets for processed tire chips should be explored by the District with the ultimate goal being to recycle the tires as opposed to using them for fuel or as a replacement to aggregate. The WestArk Tire contract is cost effective and successful.

Goal:

Enhance the capability of tire processing facility to make a product that opens up more market opportunities.

Action Plan:

1. Determine other markets & products needed.

Completion Date: December 2008

2. Feasibility study on what equipment and cost associated with this goal.

Completion Date: December 2008

3. Develop storage capacity for tire chips.

Completion Date: on going

4. Conduct a feasibility study for end use markets.

Completion Date: December 2008

- Household Chemical Waste

There are two permanent household hazardous waste (HHW) collection centers and one HHW collection event in the District. The City of Waldron/Scott County and the City of Ozark transfer stations have constructed permanent HHW centers where residents may drop off household chemicals at no charge. The permanent facilities are open five days per week during regular business hours. Pope County conducts a spring and fall HHW roundup to coincide with the fall and spring clean up. The permanent facilities have not been promoted extensively. The Pope County HHW roundup is extensively advertised and is very successful.

Conclusion: More permanent centers and one day events are needed in order to give residents an adequate opportunity to safely dispose of HHW. The cost to collect, transport and safely handle HHW from permanent sites and one day collections is a significant barrier to further developing HHW programs in the District.

Goal:

Printed on recycled paper with a minimum of 30% post-consumer content.

Reduce the quantity of household hazardous waste deposited in District landfills.

Action Plan:

1. Establish a permanent HHW center in one County.
Completion Date: October 2008
2. Construct a latex paint recovery facility at the Recycle Works facility.
Completion Date: December 2008
3. Conduct at least two HHW one day events in the District.
Completion Date: December 2008
4. Bid disposal services for all HHW facilities in the District.
Completion Date: June 2008

- Waste Electronics (e-scrap)

Because of legislation banning the disposal of certain electronic items significant interest from businesses, private citizens, and institutions exists to properly dispose of or recycle electronic equipment.

Conclusion: The disposal ban will significantly affect solid waste facilities in the District. The District should set up the infrastructure to recycle or dispose of the banned electronics.

Goal:

Create collection, transportation and processing capacity in anticipation of the ban on electronics.

Action Plan:

1. Conduct needs analysis to set up infrastructure.
Completion Date: December 2008
2. Secure the funding to set up infrastructure.
Completion Date: December 2008
3. Set up infrastructure for operation.
Completion Date: December 2009

6. Education and Public Awareness

In 2004, the District created a waste reduction program, Recycle Works, which represents the District's commitment to provide recycling and waste reduction education services. The District has taken two approaches to one-on-one education and outreach: grassroots community-based groups and volunteers.

- Grassroots community-based groups: The District assists communities in developing a broad based solid waste committee by engaging city officials, business owners, citizens, teachers, churches, and civic organizations. The committee's central goal is to find locally sustainable solutions to waste reduction instead of burying their local resources. Communities become vested and take ownership of their programs.
- Volunteers: Volunteers are engaged at every phase of the education process. From schools to community service organizations to people that want to sort recyclables at the RPC. Volunteers provide community vesting in education programs.

Following are specific programs of the District's waste reduction education program:

- Talkin' Trash- a bi-weekly column that is read by over 80,000 people in twelve local newspapers
- The Waste Diversion- a quarterly newsletter that is distributed statewide to decision makers, solid waste professionals, citizens, and businesses.
- Media-Public Service Announcements have been developed by engaging local University media students. The PSA's have been distributed to newspapers, television and radio stations in Pope, Johnson, and Scott Counties.
- Workshops/seminars- The District has presented over 20 workshops for businesses, manufacturers and community officials and teachers.
- Presentations/tours- Over 2,000 people from schools, organizations, businesses and chambers of commerce have been given tours and presentations during 2005

The district also continues to train facility operators, board members and other public officials in solid waste management practices through the ADEQ licensing program, Board retreats and other forums.

Conclusion: The District's waste reduction outreach program provides the foundation for on-going education in all aspects of solid waste management and avoidance.

In addition to the goals and Action Plan detailed below, a number of areas of this plan include education/outreach components. See also

- Disposal Section, Transfer Station subsection, Action Plan item 3
- Collections Section, City and County subsection, Action Plan item 1 and 2
- Special Materials Section, Illegal dumps subsection, Goal 2, Action Plan item 1,2,3
- Special Materials Section, Waste tire subsection, Action Plan item 1

Goal:

Create tools and resource material that can be used to implement outreach programs to the general public. Educate and inform the citizens of the district in all aspects of solid waste management integrated.

Action Plan:

1. Create an Outdoor Environmental Education Center on the fourteen acres surrounding Recycle Works.
Completion Date: December 2010
2. Create power point presentations that educate on such topics as illegal dumps, household hazardous waste, business/manufacturer options, home composting, economics of integrated solid waste management, basic recycling, and buying recycled.
Completion Date: on-going
3. Update the website for Recycle Works annually.
Completion Date: on-going

4. Create a resource library to be used by solid waste committees, decision makers, teachers, faith-based groups, waste haulers etc.
Completion Date: December 2008
5. Write and distribute 20 articles (Talkin' Trash) to be published in all local newspapers in the district.
Completion Date: December 2007
6. Produce and distribute 10 newsletters (Waste Diversion).
Completion Date: December 2007
7. Produce and distribute an electronic recycling directory.
Completion Date: December 2007
8. Conduct one six hour continuing education workshop for licensed facility operators
Completion Date: December 2007
9. Conduct one twenty hour licensing course for facility operators.
Completion Date: December 2007
10. Plan and conduct a Board of Directors Retreat
Completion Date: January 2008
11. Recyclopedia is being revised on Recycle Works Webpage.
Completion Date: December 2008
12. Spring and Fall Recycle Forums
Completion Date: December 2007

Section 204: Goal Areas-Objectives

COLLECTION

Problem-Over 50% of the waste in the District is not managed by the governing jurisdiction. There is a lack of awareness of the environmental and economic impacts of unmanaged solid waste. There are very few collection programs for recycling. The monthly cost of collection is high in the District compared to other areas with similar landfill tipping fees.

Solution- Provide technical assistance to municipalities, counties and waste haulers. Raise public awareness through education/outreach on a grassroots level. Demonstrate the cost savings that can be achieved by managing solid waste services and competitively bidding for services.

DISPOSAL

Problem-Although adequate disposal capacity exists within the District, pricing varies greatly. Waste generation that requires disposal is over 30% higher than the national average.

Solution- Place more emphasis on waste reduction programs in the District. Encourage governing jurisdictions to begin managing solid waste so they may take advantage of less expensive disposal rates.

RECYCLING

Problem- There is a lack of recycling opportunities in the District. There is a lack of public awareness about the advantages to waste reduction programs.

Solution-Expand recycling opportunities, including new drop off centers, curbside recycling programs and business/industry programs in the District. Expand the number of items accepted at Recycle Works and increase the tonnage being delivered to the Recycle Works facility. Provide technical assistant to municipalities and counties to implement or upgrade recycling programs. Expand and enhance the education/outreach programs in the District. Facilitate the creation of grassroots recycling/solid waste committees in every community.

WASTE REDUCTION

Problem-There is a lack of public awareness about waste reduction issues and benefits.

Solution-Develop and enhance education and outreach.

SPECIAL MATERIALS

Illegal dumps, littering, open burning

Problem-Public awareness of the impacts that uncontrolled dumping, littering and burning of solid waste in the District. Although laws have been implemented for many years, there is a lack of enforcement of offenders. In some areas of the District there is still a lack of basic solid waste services.

Solution-Create and implement a comprehensive education, remediation, and enforcement program for the District.

Section 205: Administrative

PLAN IMPLEMENTATION

See section 203: Goals, District's Plan's Goal

IMPLEMENTATION TIMETABLE

See section 203: Goals, District's Plan's Goals

**2007 BUDGET
ADMINISTRATION**

| | 2006 | 2007 |
|---|------------------|------------------|
| SOURCE OF FUNDS | | |
| 1. Solid Waste Assessments & Hauler Permits | \$200,000 | \$225,000 |
| 2. Waste Tire Grant Funds – Admin. | 69,700 | 73,000 |
| 3. Solid Waste & Recycling Grant Funds – Admin. | 32,700 | 49,200 |
| 4. Interest | 21,000 | 52,000 |
| Sub-total | 323,400 | 399,200 |
| SOURCE OF FUNDS LEFT ON HAND | | |
| 5. Solid Waste & Recycling Grant Funds - Admin. | 11,000 | 29,500 |
| 6. Waste Tire Grant Funds – Admin | 14,800 | 65,200 |
| 7. Illegal Dumps Fund | 83,000 | 72,900 |
| Sub-total | 108,800 | 167,600 |
| TOTAL FUNDS | \$432,200 | \$566,800 |
| EXPENSES | | |
| 1. Director | 51,200 | 52,461 |
| 2. Secretary (10%) | 2,170 | 2,221 |
| 3. Fiscal Officer (5%) | 2,000 | 2,042 |
| 4. Executive Director WAPDD (7%) | 4,300 | 4,411 |
| 5. Release Time and Fringe Benefit | 38,500 | 39,555 |
| 6. Indirect (48.3%) | 47,400 | 48,130 |
| 7. Travel and Training | 7,000 | 8,000 |
| 8. Printing | 400 | 570 |
| 9. Telephone and Other | 1,500 | 1,610 |
| Sub-total | 154,470 | 159,000 |
| 10. Illegal Dumps Grants | 83,000 | 72,900 |
| TOTAL EXPENSES | 237,470 | 231,900 |
| NET REVENUE OVER EXPENSES | \$194,730 | \$334,900 |
| | | |
| | | |
| | | |

2007 BUDGET
Recycle Works Facility

| | 2006 Actual | 2007 Budgeted |
|---|--------------------|----------------------|
| SOURCES OF FUNDS: | | |
| Sale of Recyclables | \$88,241 | \$110,000.00 |
| Hauling Fees Drop Off Centers | \$18,316 | \$20,000.00 |
| Tipping Fees | \$1,627 | \$2,000.00 |
| 2005 ADEQ Grant Funds | \$112,683 | \$0.00 |
| 1995 Atkins Grant Returned | \$0 | \$8,631.00 |
| 2007 ADEQ Grant Funds | \$0 | \$28,000.00 |
| Other Grants | \$0 | \$14,000.00 |
| Office Space Rental | \$799 | \$0.00 |
| Other | | |
| Sub-total | | \$182,631.00 |
| SOURCES OF FUNDS LEFT ON HAND | | |
| 2006 ADEQ Grant Funds | \$26,368.00 | \$105,272.00 |
| 1998 HHW Grant Funds | \$7,280.00 | \$7,280.00 |
| Sub-total | | \$112,552.00 |
| Total Funds | | \$295,183.00 |
| EXPENSES: | | |
| Recycle Coordinator Salary, Fringe | | \$33,520.00 |
| Wages-Hourly- Collection and Processing | | \$53,730.00 |
| Wages-Temp. Workers | | \$0.00 |
| Building/Office Equipment Maintenance | | \$18,000.00 |
| Equipment Maintenance | | \$27,550.00 |
| Vehicle Maintenance | | \$3,000.00 |
| Fuel | | \$9,000.00 |
| Fees Paid To DOC's/Haulers | | \$50,050.00 |
| Utilities-Gas, Water, Electric, Garbage | | \$19,750.00 |
| Telephone | | \$4,960.00 |
| Travel/Training | | \$7,875.00 |
| Insurance-Property, Liability, Vehicle | | \$19,800.00 |
| Contract Labor and Professional Fees | | \$2,200.00 |
| Promotion/Signage | | \$2,450.00 |
| Postage and Supplies | | \$4,000.00 |
| Dues and Subscriptions | | \$1,000.00 |
| Legal, Accounting, Licences and Audit | | \$6,750.00 |
| Uniforms, Tools, Safety Supplies | | \$6,300.00 |
| Annualized Capital Costs | | |
| Other Grant Projects | \$0.00 | \$14,000.00 |
| HHW Expenses | | \$7,280.00 |
| Misc. | | \$3,000.00 |
| Fixed Asset Purchases | | |
| TOTAL EXPENSES | | \$294,215.00 |

**2007 BUDGET
RECYCLE WORKS EDUCATION PROGRAM**

| | |
|---|--------------------|
| SOURCES OF FUNDS: | |
| 2007 Recycling Administration Funds | \$33,576.65 |
| Sub-total | \$33,576.65 |
| SOURCES OF FUNDS LEFT ON HAND: | |
| 2006 ADEQ Grant Funds | \$32,708.35 |
| Sub-total | \$32,708.35 |
| <u>Expenses:</u> | |
| Education & Outreach Coordinator | \$35,000.00 |
| Fringe Benefits | \$5,250.00 |
| Advertising | \$250.00 |
| Continuing Education & training (SWANA) | \$2,200.00 |
| Outside Contractors, (Joy Vickers) | \$2,700.00 |
| Web Site Development (Doug Thomas) | \$1,000.00 |
| Drop off centers (Education Materials, Kiosks) | \$2,420.00 |
| Promotional Materials (Educational Supplies, Shopping Bags, Cups) | \$3,000.00 |
| Educational Supplies (Clean-ups, signage) | \$2,000.00 |
| Membership Dues/Subscriptions | \$200.00 |
| Newsletter (Office Supply Costs) | \$1,290.00 |
| Professional Fees | \$1,500.00 |
| Recyclopedia – Development and postage | \$575.00 |
| Supplies for Alice Miller Guffey, Education Room | \$1,000.00 |
| Meeting supplies – Fall/Spring Forum, Workshops for teachers, haulers | \$1,000.00 |
| Surveys (postage, incentives) | \$250.00 |
| Travel | \$6,400.00 |
| Misc | \$250.00 |
| EDUCATION BUDGET TOTAL | \$66,285.00 |

BUDGET
Waste Tire Program
2007

| SOURCE OF FUNDS | |
|--|------------------|
| 1. Waste Tire Grant Funds - Operations | \$585,000 |
| 2. Local Waste Tire Fees | 12,000 |
| 3. Equipment Lease | 15,340 |
| 4. Interest | 2,500 |
| 5. Waste Tire Grant Funds – Equipment | 25,000 |
| SOURCE OF FUNDS LEFT ON HAND | |
| 5. Waste Tire Grant Funds 2004 | 99,000 |
| 6. Waste Tire Grant Funds – Equipment 2004 | 130,000 |
| 7. Local Waste Tire Fees | 5,000 |
| 8. Equipment Lease Reserve | 50,000 |
| 9. Interest | 35,800 |
| TOTAL FUNDS | \$959,640 |
| Operating Expenses | |
| 1. Supervisor | \$22,000 |
| 2. Utility | 24,000 |
| 3. Contract Labor (3 @ \$10.00/hr X 2080/hrs) | 62,400 |
| 4. Fringe Benefit (@ 20%) | 16,900 |
| 5. Maintenance | 25,000 |
| 6. Insurance | 12,000 |
| 7. Collection & Freight - Passenger Tires (500,000 tires @ 22 lbs. = 5,500 tons @ \$85.00 per ton) | 467,500 |
| 8. Collection & Freight – Truck Tires (27,000 tires @ 100 lbs = 1,350 tons @ \$95.00 per ton) | 128,250 |
| 9. Contingency and Other | 25,000 |
| Sub-total | 783,050 |
| Capital Equipment Purchases | |
| 1. Tire Shredder | 140,000 |
| 2. Material Handling Equipment | 15,000 |
| Sub-total | 165,000 |
| TOTAL EXPENSES | \$948,050 |
| NET REVENUE | 11,590 |

**2007 BUDGET
TIRE PROCESSING FACILITY**

| | |
|---|------------------|
| SOURCE OF FUNDS: | |
| 1. Waste Tire Grant Funds | \$137,820 |
| 2. Sale of Finished Material | \$0 |
| 3. Tipping Fees | \$0 |
| 4. Grant Funds | \$0 |
| 5. Other | \$0 |
| Sub-total | \$137,820 |
| SOURCE OF FUNDS LEFT ON HAND: | |
| 6. Waste Tire Grant Funds | \$0 |
| Sub-total | \$0 |
| Total Funds | |
| EXPENSES: | |
| 1. Wages-Hourly- Processing | \$26,900 |
| 2. Wages-Temp. Workers | \$37,315 |
| 3. Building/Office Equipment Maintenance | \$3,000 |
| 4. Equipment Maintenance | \$11,000 |
| 5. Vehicle Maintenance | \$0 |
| 6. Fuel | \$500 |
| 7. Fees Paid To DOC's/Haulers | \$0 |
| 8. Utilities-Gas, Water, Electric, Garbage | \$30,300 |
| 9.Telephone | \$200 |
| 10.Travel/Training | \$3,500 |
| 11.Insurance-Property, Liability, Vehicle | \$2,655 |
| 12.Contract Labor and Professional Fees | \$3,500 |
| 1.Education and Promotion | \$500 |
| 15.Postage and Supplies | \$0 |
| 16.Dues and Subscriptions | \$150 |
| 17.Legal, Accounting and Audit | \$0 |
| 18.Uniforms, Tools, Safety Supplies | \$1,500 |
| 19. Annualized Capital Costs | \$0 |
| 20. Contingency | \$10,000 |
| 21. Fixed Asset Purchases | \$6,800 |
| TOTAL EXPENSES | \$137,820 |